

LABOUR FORCE

NEW SOUTH WALES AND
AUSTRALIAN CAPITAL TERRITORY

EMBARGO: 11:30AM (CANBERRA TIME) FRI 27 JULY 2001

C O N T E N T S

	<i>page</i>
Notes	2
 SUMMARY OF FINDINGS	
New South Wales	3
Australian Capital Territory	7
 LIST OF TABLES AND GRAPHS	
New South Wales	10
Australian Capital Territory	11
 INFORMATION	
Explanatory notes	46
Appendix:	
Supplementary topics	51
Regions of NSW and ACT	52
Regions of NSW and ACT — maps	57
Technical note: data reliability.	58
Standard errors.	61

- For further information about these and related statistics, contact Jill Tomlinson on Sydney 02 9268 4123 or the National Information and Referral Service on 1300 135 070.

NOTES

FORTHCOMING ISSUES

ISSUE (Quarter)

EXPECTED RELEASE DATE

August 2001

29 October 2001

November 2001

29 January 2002

ABOUT THIS PUBLICATION

This publication contains estimates of the civilian labour force in New South Wales (NSW) and the Australian Capital Territory (ACT) derived from the Labour Force Survey (LFS) component of the Monthly Population Survey, which is conducted on a sample basis throughout Australia. Explanatory notes for data contained in this publication can be found on page 46. Care should be taken in the interpretation of month-to-month movements in the estimates. Survey estimates are subject to sampling and non-sampling variability as explained in the Technical note on data reliability on page 59.

CHANGES THIS MONTH

The April 2001 Labour Force Survey was conducted using a redesigned questionnaire containing additional data items and some minor definitional changes. Although the impact on core labour force series has been minor, revisions have been made to estimates previously published in this publication to ensure continuity. The revised series were initially released on 3 May 2001, and cover the period April 1986 to March 2001. *Information Paper: Implementing the Redesigned Labour Force Survey Questionnaire* (Cat. no. 6295.0) contains further information about the questionnaire changes and the revised series. Due to the above, there have been substantial changes to the format and length of time series for some tables.

For details on the content of the redesigned questionnaire, see *Information Paper: Questionnaires Used in the Labour Force Survey* (Cat. no. 6232.0), released on 10 May 2001.

SYMBOLS AND OTHER USAGES

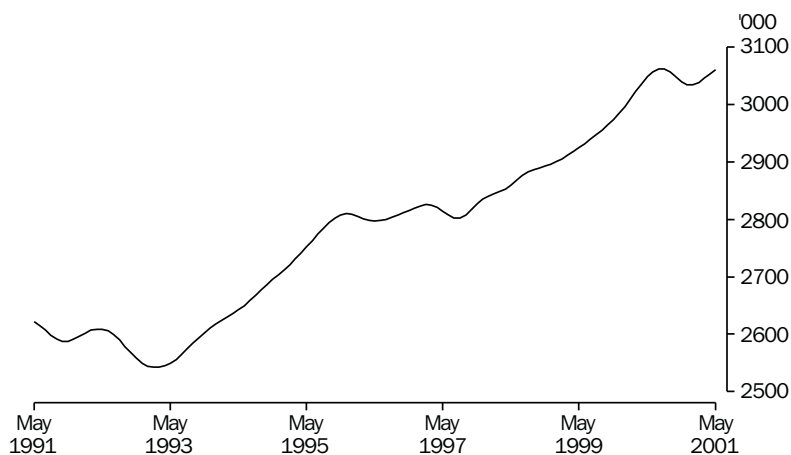
A	Area
C	City
MSR	Major Statistical Region
n.e.c.	Not elsewhere classified
SD	Statistical Division
SR	Statistical Region
SRS	Statistical Region Sector
*	Subject to sampling variability too high for most practical purposes. See the Technical note on data reliability.
. .	Not applicable
—	Nil or rounded to zero (including null cells)

Gregory W. Bray
Regional Director
New South Wales

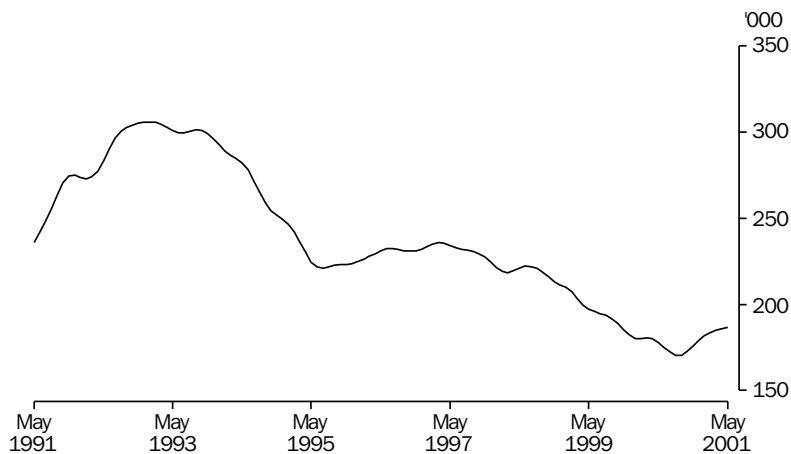
SUMMARY OF FINDINGS — NEW SOUTH WALES

TREND ESTIMATES

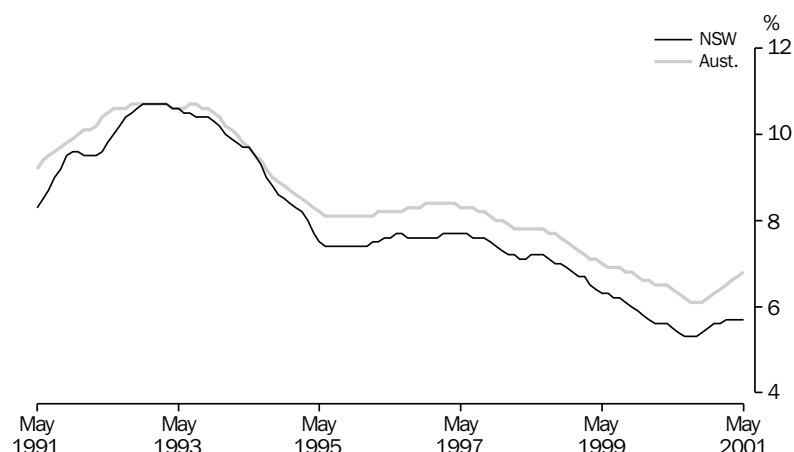
Employed persons The trend estimate of employed persons rose steadily from July 1997 to reach a peak of 3,062,100 in July 2000. It then declined to 3,034,100 in January 2001 before rising again to reach 3,060,400 in May 2001.



Unemployed persons The trend estimate of unemployed persons in NSW reached a low of 170,400 in August and September 2000. It has risen steadily since then, however, and reached 186,600 in May 2001.



Unemployment rate The trend unemployment rate in NSW reached a low of 5.3% between July and September 2000. Since then it has risen to reach 5.7% in February 2001 which has not changed in the three months to May 2001.



Participation rate and labour force The trend estimate of the participation rate in NSW reached a low of 62.1% in December 2000 and January 2001, but has risen steadily since then to reach 62.5% in May 2001.

The trend estimated labour force in NSW declined throughout the latter half of 2000 but rose again this year and reached 3,247,000 in May 2001.

SEASONALLY ADJUSTED ESTIMATES

The seasonally adjusted estimate of employment in NSW fell during the second half of 2000, reaching 3,028,300 in November 2000. It has risen since then to reach 3,064,700 in May 2001. The seasonally adjusted estimate of the number of unemployed reached a low of 167,100 in July 2000 but has also risen since then and reached 189,400 in May 2001. The seasonally adjusted estimate of the unemployment rate has been rising since August 2000 and reached 5.8% in May 2001.

REGIONS OF NSW

While the Labour Force Survey (LFS) is designed primarily to produce reliable estimates at the national and State/Territory level, it also delivers estimates for a number of regions within States. As with national and State estimates, regional labour force estimates are subject to sampling error. Since estimates for regions are components of corresponding estimates at the State level — and are thus based on a considerably smaller sample size — they are subject to higher relative standard errors. Care should therefore be taken in interpretation of regional estimates, particularly month-to-month movements.

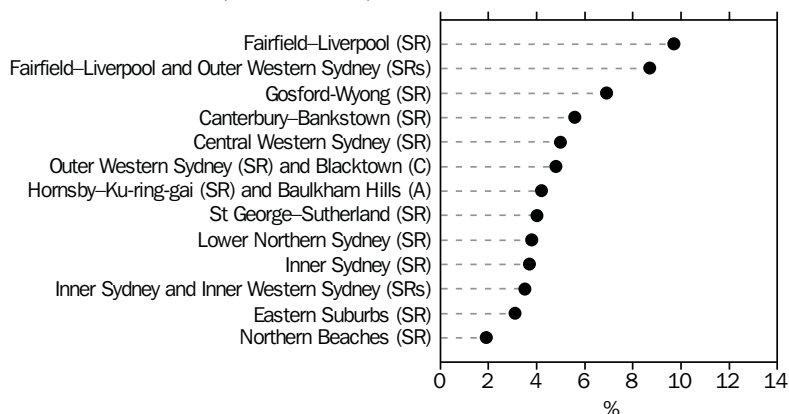
Sydney There were 2,024,600 employed people in the Sydney Major Statistical Region (MSR) in May 2001, where the unemployment rate was 4.9%.

Regional unemployment rates within the Sydney MSR in May 2001 ranged from 1.9% in Northern Beaches Statistical Region (SR) to 9.7% in Fairfield–Liverpool SR. Participation rates varied from 54.6% in Canterbury–Bankstown SR to 73.0% in Inner Sydney SR.

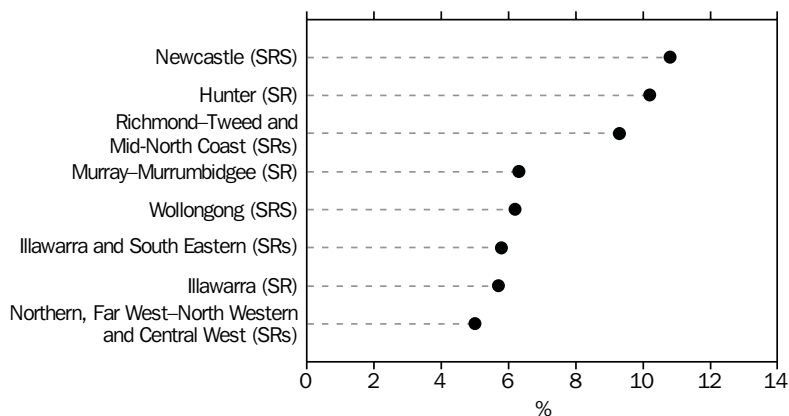
Balance of NSW There were 1,033,100 employed people in Balance of NSW MSR in May 2001, where the unemployment rate was 7.4%.

Unemployment rates ranged from 5.0% in the Northern, Far West–North Western and Central West SRs to 10.8% in Newcastle Statistical Region Sector (SRS). Participation rates varied from 54.4% in the Richmond–Tweed and Mid-North Coast SRs to 66.0% in Murray–Murrumbidgee SR.

UNEMPLOYMENT RATE, SYDNEY MSR, MAY 2001



UNEMPLOYMENT RATE, BALANCE OF NSW MSR, MAY 2001



INDUSTRY AND
OCCUPATION

The industry with the highest employment in May 2001 was Retail trade with 437,600 persons (14.3% of total employed persons in NSW) while the industry with the lowest employment was Mining with 16,200 persons (0.5% of total employed persons).

The major occupation group with the highest employment in May 2001 was Professionals with 593,000 persons (19.4% of total employed persons) while the occupation group with the lowest employment was Advanced clerical and service workers with 154,000 persons (5.0% of total employed persons).

AGE

The unemployment rate at May 2001 decreased with age from 16.1% for 15–19 year olds to 3.7% for the 45–54 years age group. The rate for the age group 55 years and over was 3.6%.

BIRTHPLACE

In May 2001, the unemployment rate for Australian-born people in NSW was 5.7%. For those born overseas in the main English-speaking countries the rate was 5.1% while for those born in other countries it was 6.3%.

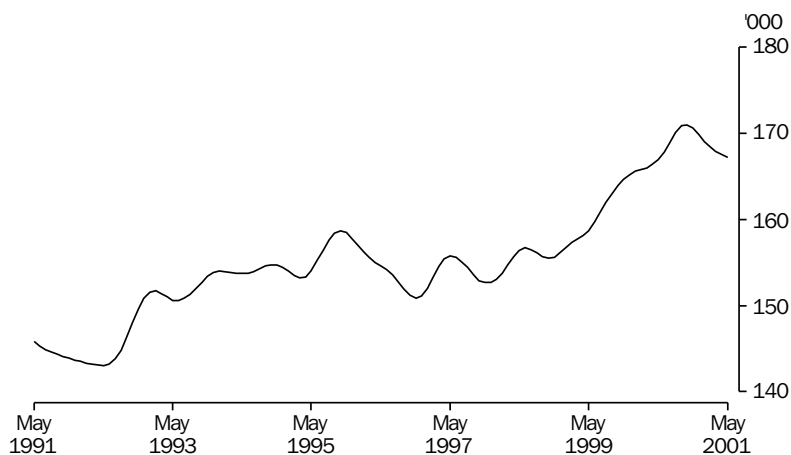
DURATION OF
UNEMPLOYMENT

In May 2001, the average (mean) duration of unemployment was 49.6 weeks. Of those who were unemployed, more than 13% had been unemployed for two years or more.

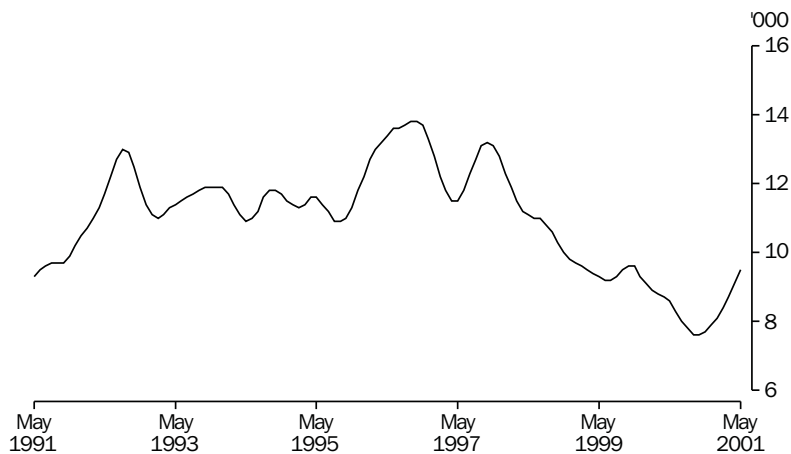
SUMMARY OF FINDINGS — AUSTRALIAN CAPITAL TERRITORY

TREND ESTIMATES

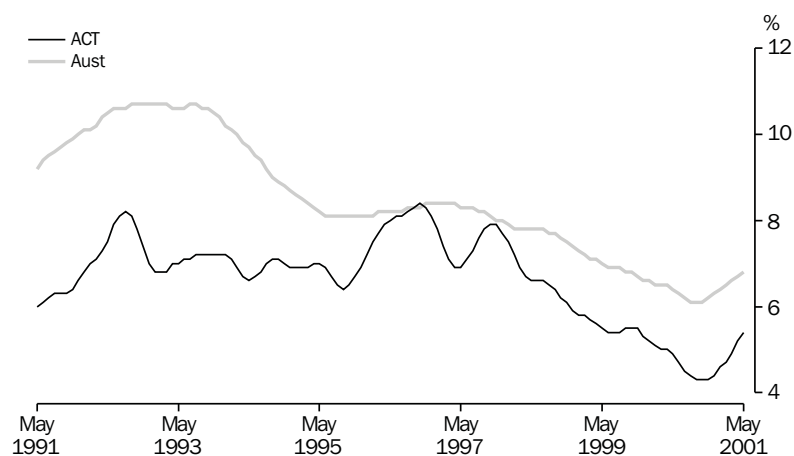
Employed persons The trend estimate of employed persons in the ACT rose throughout most of 2000. Since October 2000, however, it has declined steadily and reached 167,200 in May 2001.



Unemployed persons The trend estimate of unemployment in the ACT moved downwards throughout most of 2000, reaching 7,600 in September and October. Since then it has risen again to reach 9,500 in May 2001.



Unemployment rate The trend unemployment rate in the ACT reached a low of 4.3% between September and November 2000. Since then it has risen to reach 5.4% in May 2001.



Participation rate and labour force The ACT trend participation rate reached a high of 73.4% in September and October 2000 but has since fallen slightly to reach 72.5% in May 2001. The trend labour force estimate was 176,600 in May 2001.

INDUSTRY AND OCCUPATION

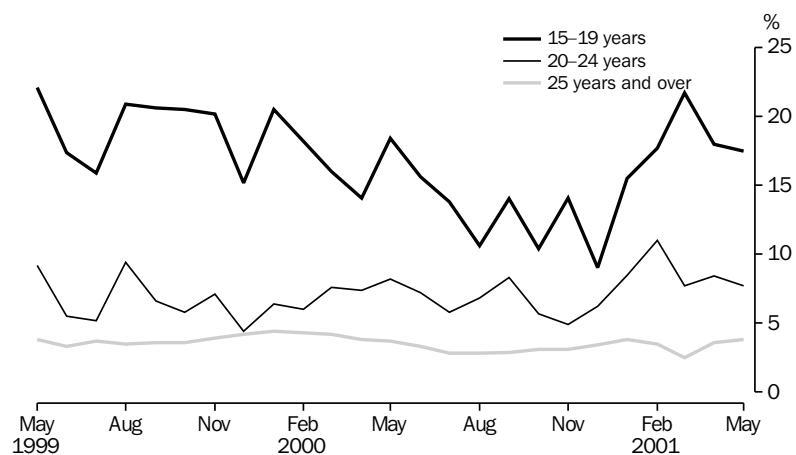
There were 35,800 people employed in Government administration and defence in the ACT in May 2001. This industry sector accounted for 21.4% of total employment in the ACT in May 2001. Property and business services accounted for 14.6% of total employment.

For the year ending May 2001, the largest occupation group in the ACT was Professionals with 47,100 employed persons or 27.9% of the total number of employed persons.

AGE

In May 2001, the proportion of employed people working part-time in the ACT ranged from 76.8% of 15–19 year olds to 20.0% of those aged 25 years and over. The average weekly hours worked by employed persons in the age group 15–19 years was 18.3 while those in the age group 25 years and over worked an average of 36.4 hours. The unemployment rates for these age groups were 17.5% and 3.8%, respectively.

Unemployment rate by age



DURATION OF UNEMPLOYMENT

The average duration of unemployment in the ACT in May 2001 was 22.0 weeks. For the 15–19 age group the average duration was 22.0 weeks while for those aged 25 years and over the average was 50.9 weeks

LIST OF TABLES AND GRAPHS

NEW SOUTH WALES

Page

Tables	Labour force status:	
	1 Original series	12
	2 Seasonally adjusted and trend series	14
	3 Age, May 2001	19
	4 Persons aged 15–24 by full-time educational attendance, May 2001	20
	5 Family status, May 2001	21
Graphs	Labour force status:	
	Trend series, May 1991–May 2001:	18
	Employed males	18
	Employed females	18
	Unemployed males	18
	Unemployed females	18
	Male unemployment rate	18
	Female unemployment rate	18
	Male participation rate	18
	Female participation rate	18
Tables	Employed persons:	
	6 Status in employment	22
	7 Age	23
	8 Industry, May 2000 and May 2001	24
	9 Occupation, May 2000 and May 2001	26
Graph	Employed persons:	
	Annual change in Employment by Age, May 2000–May 2001	23
Tables	Unemployed persons:	
	10 Age	27
	11 Unemployment rate by age	28
	12 Industry and occupation of last full-time job, May 2001	29
	13 Duration of unemployment	29
	14 Unemployment rate by birthplace and period of arrival	30
	15 Duration of unemployment by age	31
Graphs	Unemployment rate:	
	Unemployment rate by age, May 1999–May 2001	28
	Unemployment rate by period of arrival of overseas born, May 2001	30

Tables	Regional data:	
	Labour force status	
	16 Sydney Major Statistical Region	32
	17 Balance of NSW Major Statistical Region	32
	Employed persons:	
	18 Industry and occupation, Sydney Major Statistical Region and Balance of NSW Major Statistical Region, May 2001	33
	19 Labour force status of regions of NSW and ACT	34
AUSTRALIAN CAPITAL TERRITORY		
Tables	Labour force status:	
	20 Original series	39
	21 Trend series	40
	22 Age, May 2001	43
	23 Non-institutionalised persons, birthplace and year of arrival, May 2001	43
Graphs	Labour force status:	
	Trend series, May 1991–May 2001	
	Employed males	42
	Employed females	42
	Unemployed males	42
	Unemployed females	42
	Male unemployment rate	42
	Female unemployment rate	42
	Male participation rate	42
	Female participation rate	42
Tables	Employed persons:	
	24 Industry, average for year ending May 2000 and May 2001	44
	25 Occupation, average for year ending May 2000 and May 2001	44
	Unemployed persons:	
	26 Long-term unemployment	45

	Employed			Unemployed		
	Full-time workers	Part-time workers	Total	Looking for full-time work	Looking for part-time work	Total
	'000	'000	'000	'000	'000	'000
MALES						
May						
1997	1 410.7	190.9	1 601.6	122.9	14.4	137.3
1998	1 435.6	182.8	1 618.4	114.0	15.6	129.6
1999	1 460.8	203.7	1 664.5	91.9	15.7	107.6
2000						
March	1 494.6	210.0	1 704.6	92.8	18.2	111.0
April	1 506.1	212.9	1 719.0	80.4	17.6	98.0
May	1 504.9	215.9	1 720.8	79.0	17.9	96.8
2001						
February	1 479.1	205.8	1 684.9	103.8	20.5	124.4
March	1 484.0	216.1	1 700.1	90.8	17.7	108.5
April	1 480.8	233.3	1 714.1	89.1	16.0	105.1
May	1 478.0	235.1	1 713.1	89.0	18.8	107.8
MARRIED FEMALES						
May						
1997	402.0	314.1	716.1	21.8	15.2	36.9
1998	395.9	334.0	729.9	25.7	9.3	35.0
1999	399.2	338.0	737.3	18.6	11.3	29.9
2000						
March	450.2	345.9	796.1	21.3	13.4	34.7
April	456.0	345.2	801.2	24.1	8.8	32.9
May	456.5	345.9	802.4	19.6	13.1	32.7
2001						
February	450.4	334.4	784.8	17.4	8.2	25.6
March	459.2	332.2	791.5	17.8	9.8	27.6
April	449.9	367.9	817.8	18.1	10.2	28.4
May	451.5	364.6	816.1	19.6	8.8	28.3
ALL FEMALES						
May						
1997	722.6	489.9	1 212.4	65.5	30.8	96.3
1998	710.5	518.2	1 228.7	66.9	21.2	88.1
1999	729.9	523.5	1 253.4	55.5	30.0	85.6
2000						
March	771.5	541.4	1 312.8	56.7	30.7	87.4
April	791.3	530.7	1 322.0	52.1	26.8	78.8
May	785.6	541.7	1 327.3	52.5	28.9	81.4
2001						
February	790.6	530.6	1 321.2	59.6	31.4	91.0
March	800.3	530.9	1 331.2	45.7	35.3	81.0
April	785.7	571.4	1 357.1	48.2	33.2	81.4
May	781.5	563.2	1 344.7	50.2	28.9	79.1
PERSONS						
May						
1997	2 133.3	680.8	2 814.1	188.4	45.3	233.7
1998	2 146.2	701.0	2 847.2	180.8	36.9	217.7
1999	2 190.6	727.3	2 917.9	147.4	45.7	193.2
2000						
March	2 266.1	751.4	3 017.4	149.4	48.9	198.3
April	2 297.4	743.6	3 041.0	132.5	44.4	176.9
May	2 290.5	757.6	3 048.1	131.4	46.8	178.2
2001						
February	2 269.7	736.3	3 006.0	163.4	51.9	215.3
March	2 284.3	747.0	3 031.3	136.5	53.0	189.5
April	2 266.5	804.6	3 071.2	137.2	49.3	186.5
May	2 259.4	798.3	3 057.7	139.2	47.7	186.9

continued...

	<i>Labour force</i>	<i>Not in labour force</i>	<i>Civilian population aged 15 and over</i>	<i>Unemployment rate</i>	<i>Participation rate</i>
	'000	'000	'000	%	%
MALES					
May					
1997	1 739.0	681.8	2 420.8	7.9	71.8
1998	1 748.0	706.2	2 454.3	7.4	71.2
1999	1 772.1	717.9	2 490.0	6.1	71.2
2000					
March	1 815.5	708.5	2 524.0	6.1	71.9
April	1 817.1	710.5	2 527.6	5.4	71.9
May	1 817.7	713.5	2 531.1	5.3	71.8
2001					
February	1 809.2	743.9	2 553.2	6.9	70.9
March	1 808.5	746.5	2 555.1	6.0	70.8
April	1 819.1	738.5	2 557.6	5.8	71.1
May	1 820.9	739.3	2 560.1	5.9	71.1
MARRIED FEMALES					
May					
1997	753.0	654.1	1 407.1	4.9	53.5
1998	764.8	682.6	1 447.5	4.6	52.8
1999	767.2	695.9	1 463.1	3.9	52.4
2000					
March	830.8	654.0	1 484.9	4.2	56.0
April	834.2	657.5	1 491.6	3.9	55.9
May	835.1	659.2	1 494.3	3.9	55.9
2001					
February	810.4	680.7	1 491.1	3.2	54.3
March	819.0	665.0	1 484.0	3.4	55.2
April	846.1	645.8	1 492.0	3.4	56.7
May	844.4	660.9	1 505.4	3.4	56.1
ALL FEMALES					
May					
1997	1 308.8	1 203.3	2 512.1	7.4	52.1
1998	1 316.9	1 226.5	2 543.3	6.7	51.8
1999	1 339.0	1 237.2	2 576.1	6.4	52.0
2000					
March	1 400.2	1 205.4	2 605.6	6.2	53.7
April	1 400.8	1 207.6	2 608.4	5.6	53.7
May	1 408.7	1 202.5	2 611.2	5.8	53.9
2001					
February	1 412.1	1 216.9	2 629.0	6.4	53.7
March	1 412.2	1 218.1	2 630.3	5.7	53.7
April	1 438.5	1 193.7	2 632.3	5.7	54.7
May	1 423.8	1 210.4	2 634.2	5.6	54.1
PERSONS					
May					
1997	3 047.7	1 885.1	4 932.8	7.7	61.8
1998	3 064.9	1 932.7	4 997.6	7.1	61.3
1999	3 111.1	1 955.1	5 066.1	6.2	61.4
2000					
March	3 215.7	1 913.9	5 129.7	6.2	62.7
April	3 217.9	1 918.1	5 136.0	5.5	62.7
May	3 226.3	1 916.0	5 142.3	5.5	62.7
2001					
February	3 221.4	1 960.8	5 182.2	6.7	62.2
March	3 220.8	1 964.6	5 185.4	5.9	62.1
April	3 257.7	1 932.2	5 189.9	5.7	62.8
May	3 244.7	1 949.7	5 194.4	5.8	62.5

	Seasonally adjusted series				
	Employed	Unemployed	Labour force	Unemployment rate	Participation rate
	'000	'000	'000	%	%
MALES					
May					
1997	1 604.3	141.0	1 745.3	8.1	72.1
1998	1 621.3	133.4	1 754.7	7.6	71.5
1999	1 667.5	111.1	1 778.7	6.2	71.4
2000					
March	1 706.5	105.8	1 812.3	5.8	71.8
April	1 716.4	101.3	1 817.7	5.6	71.9
May	1 724.2	100.1	1 824.3	5.5	72.1
June	1 721.1	103.0	1 824.1	5.6	72.0
July	1 724.9	102.5	1 827.4	5.6	72.0
August	1 723.7	97.2	1 820.9	5.3	71.7
September	1 727.2	99.4	1 826.6	5.4	71.8
October	1 721.0	101.2	1 822.2	5.6	71.6
November	1 710.1	103.8	1 813.9	5.7	71.2
December	1 709.4	109.5	1 818.9	6.0	71.3
2001					
January	1 697.7	110.0	1 807.7	6.1	70.9
February	1 692.5	114.7	1 807.2	6.3	70.8
March	1 701.9	103.4	1 805.3	5.7	70.7
April	1 711.3	108.7	1 820.0	6.0	71.2
May	1 716.6	111.5	1 828.1	6.1	71.4
FEMALES					
May					
1997	1 212.4	97.0	1 309.4	7.4	52.1
1998	1 230.0	87.7	1 317.7	6.7	51.8
1999	1 256.0	84.5	1 340.5	6.3	52.0
2000					
March	1 315.2	77.2	1 392.4	5.5	53.4
April	1 323.7	76.1	1 399.8	5.4	53.7
May	1 330.4	80.2	1 410.6	5.7	54.0
June	1 321.9	78.7	1 400.6	5.6	53.6
July	1 334.9	64.6	1 399.5	4.6	53.5
August	1 358.4	71.2	1 429.6	5.0	54.6
September	1 333.5	70.2	1 403.7	5.0	53.5
October	1 325.2	67.6	1 392.8	4.9	53.1
November	1 318.2	72.7	1 390.9	5.2	53.0
December	1 324.0	74.7	1 398.7	5.3	53.3
2001					
January	1 337.6	69.5	1 407.2	4.9	53.6
February	1 339.6	76.1	1 415.6	5.4	53.8
March	1 333.8	71.5	1 405.3	5.1	53.4
April	1 358.8	78.6	1 437.4	5.5	54.6
May	1 348.1	77.9	1 426.0	5.5	54.1

continued...

	<i>Seasonally adjusted series</i>				
	<i>Employed</i>	<i>Unemployed</i>	<i>Labour force</i>	<i>Unemployment rate</i>	<i>Participation rate</i>
	'000	'000	'000	%	%
PERSONS					
May					
1997	2 816.7	238.0	3 054.7	7.8	61.9
1998	2 851.2	221.1	3 072.3	7.2	61.5
1999	2 923.5	195.6	3 119.1	6.3	61.6
2000					
March	3 021.7	183.0	3 204.7	5.7	62.5
April	3 040.1	177.4	3 217.6	5.5	62.6
May	3 054.6	180.3	3 234.9	5.6	62.9
June	3 043.0	181.7	3 224.7	5.6	62.6
July	3 059.8	167.1	3 226.9	5.2	62.6
August	3 082.1	168.4	3 250.5	5.2	63.0
September	3 060.6	169.6	3 230.3	5.3	62.5
October	3 046.2	168.8	3 215.0	5.3	62.2
November	3 028.3	176.5	3 204.8	5.5	62.0
December	3 033.4	184.2	3 217.6	5.7	62.2
2001					
January	3 035.3	179.5	3 214.9	5.6	62.1
February	3 032.1	190.8	3 222.9	5.9	62.2
March	3 035.7	174.9	3 210.6	5.4	61.9
April	3 070.1	187.3	3 257.4	5.7	62.8
May	3 064.7	189.4	3 254.0	5.8	62.6

continued...

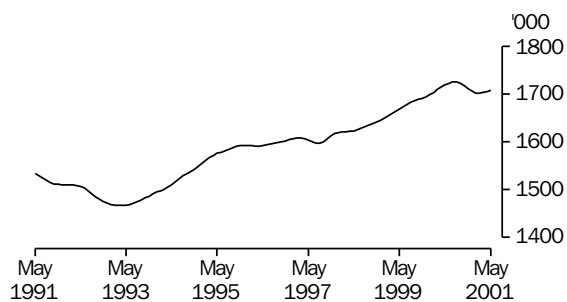
	<i>Trend series(a)</i>				
	<i>Employed</i>	<i>Unemployed</i>	<i>Labour force</i>	<i>Unemployment rate</i>	<i>Participation rate</i>
	'000	'000	'000	%	%
MALES					
May					
1997	1 604.0	138.1	1 742.1	7.9	72.0
1998	1 623.7	132.1	1 755.8	7.5	71.5
1999	1 669.5	111.5	1 781.1	6.3	71.5
2000					
March	1 709.5	103.2	1 812.7	5.7	71.8
April	1 715.0	102.7	1 817.7	5.7	71.9
May	1 719.9	101.8	1 821.7	5.6	72.0
June	1 723.5	100.7	1 824.2	5.5	72.0
July	1 725.3	100.1	1 825.5	5.5	71.9
August	1 725.2	99.9	1 825.1	5.5	71.8
September	1 722.9	100.6	1 823.5	5.5	71.7
October	1 718.1	102.5	1 820.6	5.6	71.5
November	1 712.0	104.8	1 816.8	5.8	71.3
December	1 706.2	107.1	1 813.3	5.9	71.1
2001					
January	1 702.6	108.7	1 811.3	6.0	71.0
February	1 701.8	109.5	1 811.2	6.0	70.9
March	1 703.1	109.7	1 812.8	6.1	70.9
April	1 705.6	109.8	1 815.4	6.0	71.0
May	1 709.0	109.7	1 818.7	6.0	71.1
FEMALES					
May					
1997	1 210.6	96.1	1 306.7	7.4	52.0
1998	1 235.9	88.9	1 324.9	6.7	52.1
1999	1 254.9	85.5	1 340.4	6.4	52.0
2000					
March	1 313.3	77.2	1 390.4	5.5	53.4
April	1 321.0	77.2	1 398.2	5.5	53.6
May	1 328.4	76.1	1 404.4	5.4	53.8
June	1 334.0	74.2	1 408.2	5.3	53.9
July	1 336.7	72.2	1 408.9	5.1	53.8
August	1 336.4	70.5	1 406.9	5.0	53.7
September	1 334.1	69.8	1 403.8	5.0	53.6
October	1 330.6	69.9	1 400.5	5.0	53.4
November	1 328.0	70.7	1 398.8	5.1	53.3
December	1 328.1	71.9	1 400.0	5.1	53.3
2001					
January	1 331.5	72.9	1 404.4	5.2	53.4
February	1 337.2	73.9	1 411.1	5.2	53.7
March	1 342.6	75.0	1 417.6	5.3	53.9
April	1 347.4	76.1	1 423.5	5.3	54.1
May	1 351.4	76.9	1 428.3	5.4	54.2
For footnotes see end of table.					continued...

	<i>Trend series(a)</i>				
	<i>Employed</i>	<i>Unemployed</i>	<i>Labour force</i>	<i>Unemployment rate</i>	<i>Participation rate</i>
	'000	'000	'000	%	%
PERSONS					
May					
1997	2 816.7	238.0	3 054.7	7.8	61.9
1998	2 851.2	221.1	3 072.3	7.2	61.5
1999	2 923.5	195.6	3 119.1	6.3	61.6
2000					
March	3 021.7	183.0	3 204.7	5.7	62.5
April	3 040.1	177.4	3 217.6	5.5	62.6
May	3 054.6	180.3	3 234.9	5.6	62.9
June	3 043.0	181.7	3 224.7	5.6	62.6
July	3 059.8	167.1	3 226.9	5.2	62.6
August	3 082.1	168.4	3 250.5	5.2	63.0
September	3 060.6	169.6	3 230.3	5.3	62.5
October	3 046.2	168.8	3 215.0	5.3	62.2
November	3 028.3	176.5	3 204.8	5.5	62.0
December	3 033.4	184.2	3 217.6	5.7	62.2
2001					
January	3 035.3	179.5	3 214.9	5.6	62.1
February	3 032.1	190.8	3 222.9	5.9	62.2
March	3 035.7	174.9	3 210.6	5.4	61.9
April	3 070.1	187.3	3 257.4	5.7	62.8
May	3 064.7	189.4	3 254.0	5.8	62.6

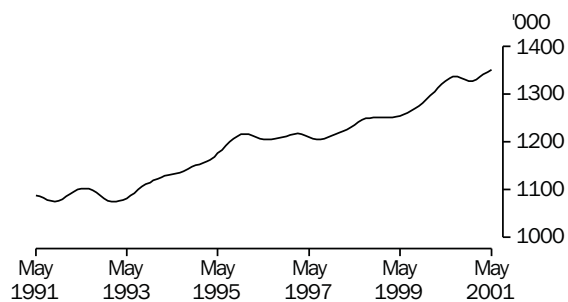
(a) See Explanatory Notes 29 and 30.

TREND SERIES, NSW(a)

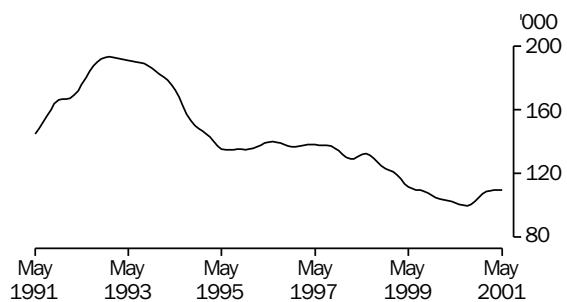
EMPLOYED MALES



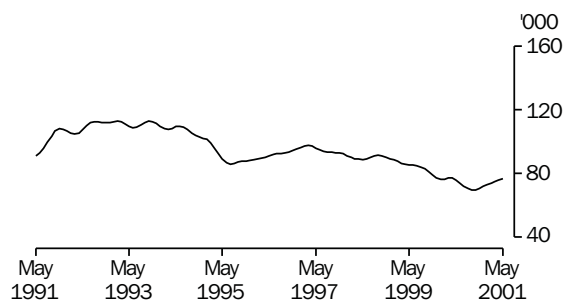
EMPLOYED FEMALES



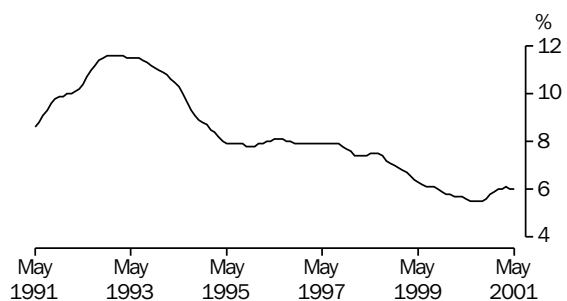
UNEMPLOYED MALES



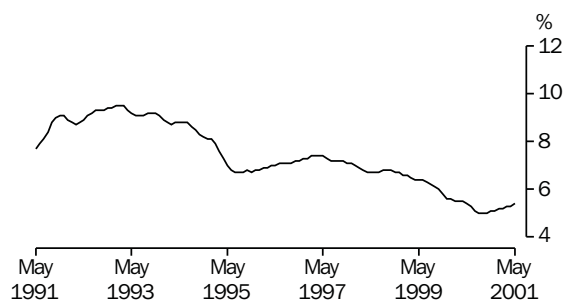
UNEMPLOYED FEMALES



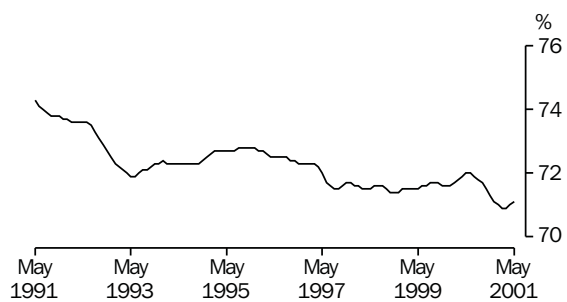
MALE UNEMPLOYMENT RATE



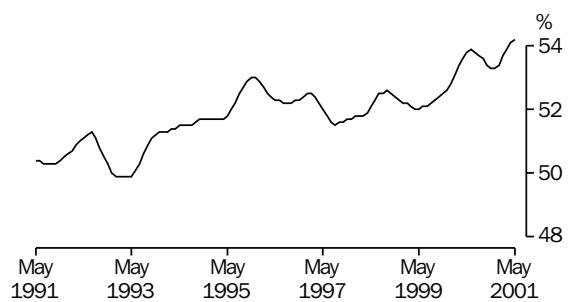
FEMALE UNEMPLOYMENT RATE



MALE PARTICIPATION RATE



FEMALE PARTICIPATION RATE



(a) Comparisons between these graphs should not be made, as their vertical axes are not similarly scaled.

Age group (years)	Employed			Unemployed			Labour force	Not in labour force	Civilian population aged 15 and over	Unem- ployment rate	Parti- cipation rate
	Full-time workers	Part-time workers	Total	Looking for full-time work	Looking for part-time work	Total					
	'000	'000	'000	'000	'000	'000	'000	'000	'000	%	%
MALES											
15-19	42.7	62.2	104.8	10.6	9.5	20.1	124.9	104.1	229.0	16.1	54.5
20-24	133.6	41.3	174.9	19.0	*4.0	23.0	197.9	31.1	229.0	11.6	86.4
25-34	389.5	34.5	424.0	21.7	*1.5	23.2	447.3	38.2	485.4	5.2	92.2
35-44	405.4	29.3	434.9	15.8	*1.1	16.8	451.7	45.1	496.9	3.7	90.9
45-54	337.4	28.5	366.0	13.7	*2.0	15.6	381.6	61.9	443.5	4.1	86.0
55-59	102.7	14.3	117.0	*4.2	*0.7	*4.9	121.9	49.2	171.2	*4.0	71.2
60-64	45.5	10.5	56.0	*2.8	*0.0	*2.8	58.8	79.1	137.9	*4.8	42.6
65 and over	21.1	14.5	35.6	*1.2	*0.0	*1.2	36.8	330.6	367.4	*3.3	10.0
Total	1 477.9	235.1	1 713.2	89.0	18.8	107.6	1 820.9	739.3	2 560.3	5.9	71.1
MARRIED FEMALES											
15-19	*1.1	*2.7	*3.8	*0.6	*0.6	*1.2	*4.9	*1.6	6.6	*24.5	74.2
20-24	27.2	10.9	38.1	*3.7	*0.4	*4.1	42.2	14.2	56.4	*9.7	74.8
25-34	138.2	73.7	211.9	*5.6	*3.2	8.8	220.7	94.7	315.5	4.0	70.0
35-44	124.1	130.9	255.1	*5.5	*3.3	8.8	263.8	107.2	370.9	3.3	71.1
45-54	125.5	96.5	222.0	*2.7	*0.7	*3.5	225.5	111.0	336.4	*1.6	67.0
55-59	26.7	31.8	58.4	*1.3	*0.3	*1.6	60.1	63.5	123.5	*2.7	48.7
60-64	6.7	10.3	17.1	*0.0	*0.3	*0.3	17.4	78.5	95.9	*1.7	18.1
65 and over	*2.1	7.7	9.8	*0.0	*0.0	*0.0	9.8	190.3	200.1	*0.0	11.3
Total	451.5	364.6	816.1	19.6	8.8	28.3	844.4	660.9	1 505.4	3.4	56.1
ALL FEMALES											
15-19	27.4	79.0	106.4	8.3	12.1	20.4	126.8	91.7	218.5	16.1	58.0
20-24	113.0	52.5	165.5	9.3	*4.7	13.9	179.5	42.9	222.4	7.7	80.7
25-34	241.9	100.6	342.5	10.7	*5.0	15.7	358.2	132.2	490.5	4.4	73.0
35-44	177.9	155.9	333.9	12.0	*5.1	17.1	351.0	143.5	494.5	4.9	71.0
45-54	170.1	112.2	282.2	7.6	*1.4	9.0	291.1	144.6	435.8	3.1	66.8
55-59	39.8	36.9	76.8	*2.3	*0.3	*2.6	79.4	86.2	165.6	*3.3	47.9
60-64	8.6	14.3	23.0	*0.0	*0.3	*0.3	23.3	113.4	136.7	*1.3	17.0
65 and over	*2.7	11.7	14.5	*0.0	*0.0	*0.0	14.5	455.9	470.3	*0.0	3.1
Total	781.5	563.2	1 344.7	50.2	28.9	79.1	1 423.8	1 210.4	2 634.2	5.6	54.1
PERSONS											
15-19	70.1	141.2	211.3	18.9	21.6	40.5	251.7	195.8	447.5	16.1	56.2
20-24	246.6	93.8	340.4	28.3	8.7	36.9	377.4	74.0	451.3	9.8	83.6
25-34	631.4	135.1	766.5	32.4	6.5	39.0	805.5	170.4	975.9	4.8	82.5
35-44	583.5	185.3	768.7	27.7	6.3	34.1	802.7	188.5	991.2	4.2	81.0
45-54	507.4	140.7	648.1	21.3	*3.3	24.6	672.7	206.5	879.3	3.7	76.5
55-59	142.5	51.2	193.8	6.5	*1.0	7.6	201.3	135.4	336.8	3.8	59.8
60-64	54.1	24.8	79.0	*2.8	*0.3	*3.1	82.1	192.5	274.6	*3.8	29.9
65 and over	23.9	26.2	50.0	*1.2	*0.0	*1.2	51.3	786.5	837.7	*2.3	6.1
Total	2 259.4	798.3	3 057.7	139.2	47.7	186.9	3 244.7	1 949.7	5 194.4	5.8	62.5

Age (years)	Employed			Unemployed			Labour force	Not in labour force	Civilian population aged 15 and over	Unemployment rate	Participation rate
	Full-time workers	Part-time workers	Total	Looking for full-time work	Looking for part-time work	Total					
	'000	'000	'000	'000	'000	'000	'000	'000	'000	%	%
ATTENDING SCHOOL OR A TERTIARY EDUCATIONAL INSTITUTION FULL-TIME											
15–19	*1.9	114.2	116.0	*2.9	20.6	23.5	139.6	178.3	317.8	16.8	43.9
15	*0.3	23.6	23.9	*0.3	5.9	6.2	30.0	55.8	85.9	20.7	34.9
16	*0.0	27.8	27.8	*1.0	6.5	7.5	35.2	45.5	80.8	21.3	43.6
17	*0.3	23.9	24.2	*0.9	*3.0	*3.8	28.0	41.2	69.2	*13.6	40.5
18	*0.0	19.9	19.9	*0.3	*2.9	*3.2	23.0	22.6	45.6	*13.9	50.4
19	*1.3	19.1	20.3	*0.6	*2.4	*2.9	23.3	13.1	36.4	*12.4	64.0
20–24	*3.4	49.2	52.7	*2.8	*4.5	7.2	59.9	39.6	99.5	12.0	60.2
20	*1.6	19.4	21.0	*0.7	*0.4	*1.2	22.1	13.9	36.0	*5.4	61.4
21	*1.0	11.7	12.7	*1.2	*2.2	*3.4	16.1	7.5	23.5	*21.1	68.5
22	*0.0	8.3	8.3	*0.0	*0.0	*0.0	8.3	8.9	17.2	*0.0	48.3
23	*0.4	7.1	7.6	*0.3	*0.3	*0.7	8.3	*5.7	14.0	*8.4	59.3
24	*0.5	*2.7	*3.1	*0.5	*1.6	*2.0	*5.1	*3.6	8.8	*39.2	58.0
Total aged 15–24	*5.3	163.4	168.7	*5.7	25.1	30.7	199.5	217.9	417.3	15.4	47.8
NOT ATTENDING SCHOOL OR A TERTIARY EDUCATIONAL INSTITUTION FULL-TIME											
15–19	68.2	27.0	95.2	15.9	*1.0	16.9	112.2	17.5	129.7	15.1	86.5
15	*0.6	*0.4	*1.0	*0.4	*0.0	*0.4	*1.3	*1.1	*2.4	*30.8	54.2
16	*1.8	*2.4	*4.2	*1.5	*0.3	*1.8	6.0	*1.8	7.8	*30.0	76.9
17	10.3	*3.3	13.6	*2.4	*0.3	*2.7	16.2	*3.9	20.1	*16.7	80.6
18	22.1	11.1	33.2	*5.6	*0.4	6.0	39.2	5.9	45.1	15.3	86.9
19	33.5	9.9	43.3	6.1	*0.0	6.1	49.4	*4.9	54.3	12.3	91.0
20–24	243.2	44.6	287.8	25.5	*4.2	29.7	317.5	34.4	351.9	9.4	90.2
20	35.3	7.8	43.1	*3.6	*0.8	*4.4	47.5	7.4	54.9	*9.3	86.5
21	45.9	8.3	54.2	6.0	*0.0	6.0	60.2	6.1	66.3	10.0	90.8
22	48.4	10.7	59.1	6.0	*1.8	7.8	66.9	5.9	72.8	11.7	91.9
23	55.3	9.5	64.8	*3.6	*0.0	*3.6	68.5	7.2	75.7	*5.3	90.5
24	58.3	8.2	66.5	6.3	*1.6	7.9	74.4	7.7	82.1	10.6	90.6
Total aged 15–24	311.4	71.6	383.0	41.4	*5.2	46.6	429.7	51.9	481.6	10.8	89.2
TOTAL											
15–19	70.1	141.2	211.2	18.8	21.6	40.4	251.8	195.8	447.5	16.0	56.3
15	*0.9	24.0	24.9	*0.7	5.9	6.6	31.3	56.9	88.3	21.1	35.4
16	*1.8	30.2	32.0	*2.5	6.8	9.3	41.2	47.3	88.6	22.6	46.5
17	10.6	27.2	37.8	*3.3	*3.3	6.5	44.2	45.1	89.3	14.7	49.5
18	22.1	31.0	53.1	5.9	*3.3	9.2	62.2	28.5	90.7	14.8	68.6
19	34.8	29.0	63.6	6.7	*2.4	9.0	72.7	18.0	90.7	12.4	80.2
20–24	246.6	93.8	340.5	28.3	8.7	36.9	377.4	74.0	451.4	9.8	83.6
20	36.9	27.2	64.1	*4.3	*1.2	*5.6	69.6	21.3	90.9	*8.0	76.6
21	46.9	20.0	66.9	7.2	*2.2	9.4	76.3	13.6	89.8	12.3	85.0
22	48.4	19.0	67.4	6.0	*1.8	7.8	75.2	14.8	90.0	10.4	83.6
23	55.7	16.6	72.4	*3.9	*0.3	*4.3	76.8	12.9	89.7	*5.6	85.6
24	58.8	10.9	69.6	6.8	*3.2	9.9	79.5	11.3	90.9	12.5	87.5
Total aged 15–24	311.4	235.0	551.7	41.4	*5.2	77.3	629.2	269.8	898.9	12.3	70.0

	Employed			Unemployed			Labour force	Not in labour force	Civilian population aged 15 and over	Unemployment rate	Participation rate
	Full-time workers	Part-time workers	Total	Looking for full-time work	Looking for part-time work	Total					
Family status	'000	'000	'000	'000	'000	'000	'000	'000	'000	%	%
Family member	1 841.6	692.7	2 534.3	108.6	39.2	147.7	2 682.0	1 455.3	4 137.3	5.5	64.8
Husband or partner											
With children under 15	503.9	32.7	536.6	17.6	*2.3	19.9	556.5	45.6	602.1	3.6	92.4
Without children under 15	487.1	53.5	540.7	18.1	*1.1	19.3	559.9	348.6	908.5	3.4	61.6
With dependants	590.6	40.4	631.0	20.7	*2.6	23.4	654.4	56.3	710.6	3.6	92.1
Without dependants	400.4	45.9	446.3	15.0	*0.8	15.8	462.1	337.9	800.0	3.4	57.8
Wife or partner											
With children under 15	138.1	193.6	331.7	10.9	*5.2	16.1	347.8	216.7	564.5	4.6	61.6
Without children under 15	291.8	161.6	453.4	8.0	*3.6	11.6	465.0	413.8	878.8	2.5	52.9
With dependants	182.9	228.3	411.2	13.3	5.9	19.2	430.4	239.3	669.7	4.5	64.3
Without dependants	247.0	126.9	373.9	*5.6	*2.9	8.5	382.4	391.1	773.5	2.2	49.4
Male lone parent											
With children under 15	8.2	*0.4	8.6	*2.2	*0.5	*2.7	11.3	*4.4	15.7	*23.9	72.0
With dependent students but without children under 15	*5.3	*0.4	*5.7	*0.4	*0.0	*0.4	6.1	*0.7	6.7	*6.6	91.0
With no dependants but with children aged 15 and over	7.1	*1.4	8.6	*0.3	*0.0	*0.3	8.9	8.1	16.9	*3.4	52.7
Female lone parent											
With children under 15	21.8	30.1	51.9	8.2	*4.1	12.3	64.1	68.3	132.4	19.2	48.4
With dependent students but without children under 15	8.5	*5.4	13.8	*1.3	*0.0	*1.3	15.2	6.6	21.7	*8.6	70.0
With no dependants but with children aged 15 and over	16.1	6.1	22.2	*0.7	*0.3	*1.0	23.2	40.5	63.7	*4.3	36.4
Dependent student	*4.4	134.5	138.9	*3.4	18.2	21.6	160.5	173.6	334.0	13.5	48.1
Non-dependent child	298.8	59.9	358.7	33.2	*2.4	35.5	394.3	58.9	453.2	9.0	87.0
Other related individual	50.5	13.1	63.6	*4.2	*1.6	*5.8	69.3	69.8	139.1	*8.4	49.8
Not a member of a family											
Living alone	151.2	36.4	187.6	9.9	*5.2	15.1	202.7	41.7	244.4	7.4	82.9
Not living alone	182.9	38.2	221.1	16.0	*2.3	18.3	239.4	293.0	532.4	7.6	45.0
Usual resident of a household where relationship was determined	2 175.6	767.4	2 943.0	134.5	46.6	181.1	3 124.1	1 790.1	4 914.2	5.8	63.6

6

EMPLOYED PERSONS(a), STATUS IN EMPLOYMENT, NSW

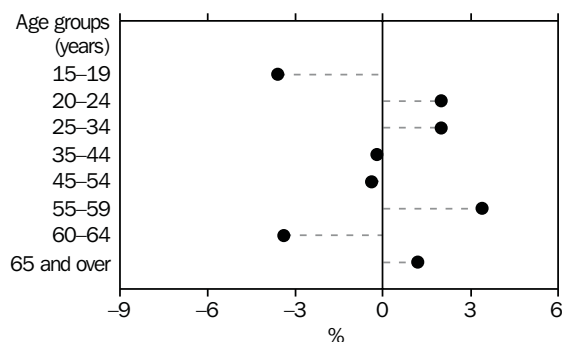
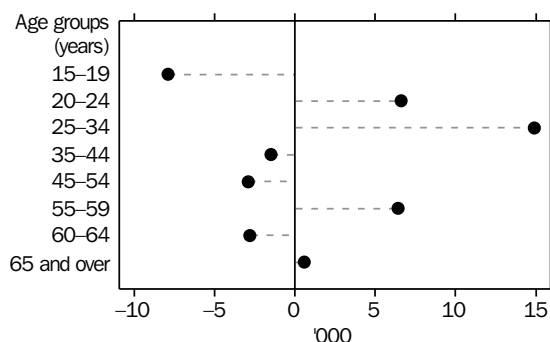
	Males			Females			Persons		
	May 2000	February 2000	May 2001	May 2000	February 2001	May 2001	May 2000	February 2001	May 2001
<i>Status in employment</i>	'000	'000	'000	'000	'000	'000	'000	'000	'000
Employees	1 454.2	1 422.6	1 436.2	1 204.8	1 194.6	1 227.3	2 658.9	2 617.1	2 663.5
Employers	75.5	73.9	74.4	29.6	32.3	34.2	105.2	106.3	108.6
Own account workers	183.2	174.8	195.3	79.2	75.0	79.0	262.4	249.8	274.3
Total employed	1 719.5	1 679.6	1 713.1	1 324.9	1 316.1	1 344.7	3 044.4	2 995.8	3 057.7

(a) A change in the definition of employed persons has caused an estimated increase of 5,900 employed people in NSW from March 2001 to April 2001.

	Age group (years)								
	15-19	20-24	25-34	35-44	45-54	55-59	60-64	65 and over	Total employed
Month	'000	'000	'000	'000	'000	'000	'000	'000	'000
MALES									
2000									
May	108.1	176.7	426.2	432.5	367.2	114.0	57.5	37.2	1 719.5
2001									
February	104.0	173.5	411.4	431.0	360.7	112.9	54.4	31.8	1 679.6
March	102.3	173.9	416.2	433.0	363.8	114.9	57.1	35.4	1 696.5
April	108.3	170.4	419.8	432.8	368.0	117.7	59.2	38.0	1 714.1
May	104.8	174.9	424.0	434.8	365.9	117.0	56.0	35.6	1 713.1
MARRIED FEMALES									
2000									
May	*1.5	38.0	205.3	260.7	219.8	51.5	15.3	9.8	801.7
2001									
February	*2.1	30.1	203.8	247.8	214.5	55.2	18.7	10.2	782.4
March	*2.8	34.6	203.5	246.0	211.7	58.5	20.8	12.4	790.2
April	*4.6	34.8	204.0	255.1	224.5	60.9	22.0	11.8	817.8
May	*3.8	38.1	211.9	255.0	222.0	58.4	17.1	9.8	816.1
ALL FEMALES									
2000									
May	111.1	157.1	325.4	337.7	283.8	73.4	24.3	12.2	1 324.9
2001									
February	103.1	161.7	329.1	326.5	278.3	76.4	26.1	14.8	1 316.1
March	103.2	161.4	334.0	331.7	275.6	77.6	26.8	18.6	1 328.9
April	105.7	162.1	338.9	339.7	285.4	81.5	26.7	17.2	1 357.1
May	106.4	165.5	342.5	333.8	282.2	76.8	23.0	14.4	1 344.7
PERSONS									
2000									
May	219.2	333.8	751.6	770.2	651.0	187.4	81.8	49.4	3 044.4
2001									
February	207.2	335.2	740.4	757.6	639.0	189.4	80.5	46.6	2 995.8
March	205.5	335.3	750.3	764.7	639.4	192.5	83.9	53.9	3 025.4
April	214.0	332.5	758.6	772.4	653.4	199.2	85.9	55.2	3 071.2
May	211.3	340.4	766.5	768.7	648.1	193.8	79.0	50.0	3 057.7

(a) A change in the definition of employed persons has caused an estimated increase of 5,900 employed people in NSW from March 2001 to April 2001.

ANNUAL CHANGE IN EMPLOYMENT BY AGE, NSW, MAY 2000 TO MAY 2001



	Males		Females		Persons	
	May 2000	May 2001	May 2000	May 2001	May 2000	May 2001
<i>Industry division and subdivision</i>	'000	'000	'000	'000	'000	'000
Agriculture, forestry and fishing						
Agriculture	77.3	80.4	32.3	34.1	109.6	114.5
Services to Agriculture; Hunting and trapping	7.6	7.7	*2.0	*3.4	9.6	11.1
Forestry and Logging	*2.2	*3.1	*0.0	*1.0	*2.2	*4.2
Commercial Fishing	*2.7	*3.2	*0.3	*0.7	*3.1	*3.8
Total	89.8	94.4	34.6	39.2	124.5	133.6
Mining						
Coal Mining	10.0	11.6	*0.0	*0.7	10.0	12.2
Oil and Gas Extraction	*0.0	*0.0	*0.0	*0.0	*0.0	*0.0
Metal Ore Mining	*2.1	*1.2	*0.0	*0.0	*2.1	*1.2
Other Mining	*2.0	*1.5	*0.0	*0.4	*2.0	*1.8
Services to Mining	*0.0	*0.7	*0.0	*0.3	*0.0	*1.0
Total	14.1	14.9	*0.0	*1.3	14.1	16.2
Manufacturing						
Food, Beverage and Tobacco manufacturing	33.3	39.2	19.8	21.9	53.1	61.1
Textile, Clothing, Leather and Footwear manufacturing	14.1	10.2	18.5	15.4	32.6	25.6
Wood and paper Product Manufacturing	20.8	21.2	*4.1	*3.5	24.9	24.7
Printing, Publishing and Recorded media	31.7	27.0	20.4	20.6	52.1	47.6
Petroleum, Coal, Chemical and Associated product manufacturing	23.0	21.5	16.0	9.7	39.0	31.2
Non-metallic Mineral Product Manufacturing	12.6	16.0	*2.0	*3.1	14.7	19.1
Metal Product Manufacturing	61.8	59.2	9.6	7.8	71.3	66.9
Machinery and Equipment Manufacturing	54.9	53.6	15.3	13.3	70.2	66.9
Other Manufacturing	23.3	15.5	3.6	3.0	26.8	18.5
Total	275.4	263.4	109.4	98.2	384.8	361.7
Electricity, Gas and Water Supply						
Electricity and Gas Supply	13.5	12.9	*2.1	*2.4	15.6	15.3
Water Supply, Sewerage and Drainage Services	*5.4	*5.0	*1.4	*1.4	6.7	6.4
Total	18.8	17.9	*3.5	*3.8	22.3	21.7
Construction						
General Construction	74.5	74.4	8.5	10.0	83.0	84.4
Construction Trade Services	144.6	126.6	17.6	17.2	162.2	143.7
Total	219.1	200.9	26.1	27.2	245.2	228.1
Wholesale trade						
Basic Material Wholesaling	24.8	26.6	7.5	6.2	32.4	32.7
Machinery and Motor Vehicle Wholesaling	47.2	45.8	13.7	13.7	60.9	59.5
Personal and Household good Wholesaling	37.9	34.4	22.5	24.8	60.4	59.2
Total	109.9	106.8	43.8	44.7	153.7	151.5
Retail trade						
Food Retailing	79.6	70.8	93.9	101.3	173.5	172.1
Personal and Household Good Retailing	66.2	74.8	111.2	106.3	177.3	181.1
Motor Vehicle Retailing and Services	66.5	67.2	18.7	17.2	85.1	84.4
(a) For footnotes see end of table.						continued...

	Males		Females		Persons	
	May 2000	May 2001	May 2000	May 2001	May 2000	May 2001
<i>Industry division and subdivision</i>	'000	'000	'000	'000	'000	'000
Accommodation, cafes and restaurants	65.3	70.8	84.2	81.8	149.5	152.6
Transport and Storage						
Road Transport	55.8	52.5	13.0	8.8	68.7	61.4
Rail Transport	13.9	14.8	*3.8	*2.4	17.7	17.2
Water Transport	*2.8	*3.3	*1.5	*0.7	*4.3	*4.0
Air and Space Transport	15.7	14.7	*5.2	7.5	20.9	22.2
Other Transport	*0.0	*0.0	*0.0	*0.0	*0.0	*0.0
Services to Transport	14.7	14.3	12.7	13.5	27.4	27.8
Storage	9.8	8.8	*2.0	*1.7	11.8	10.5
Total	112.7	108.4	38.2	34.7	150.9	143.1
Communication Services	42.5	50.5	16.2	17.0	58.7	67.5
Finance and Insurance						
Finance	32.6	30.3	41.2	45.6	73.8	75.9
Insurance	12.6	12.5	18.9	14.9	31.5	27.5
Services to Finance and Insurance	25.6	28.3	21.9	25.2	47.5	53.4
Total	70.8	71.1	82.0	85.7	152.8	156.8
Property and Business Services						
Property Services	25.9	24.5	18.1	24.2	44.0	48.7
Business Services	182.5	185.2	143.3	157.9	325.7	343.1
Total	208.3	209.8	161.4	182.0	369.7	391.8
Government administration and Defence						
Government Administration	53.5	53.8	34.3	39.3	87.8	93.2
Defence	*2.8	*5.5	*1.6	*1.8	*4.4	7.2
Total	56.3	59.3	35.9	41.1	92.2	100.4
Education	62.6	64.7	142.6	134.6	205.3	199.2
Health and Community Services						
Health Services	46.7	55.3	172.9	179.8	219.6	235.1
Community Services	10.7	14.2	57.0	60.4	67.7	74.5
Total	57.4	69.5	230.0	240.1	287.4	309.6
Cultural and Recreational Services						
Motion Picture, Radio and Television services	11.4	13.0	10.5	8.9	21.9	21.8
Libraries, Museums and the Arts	9.5	12.6	11.6	9.7	21.1	22.3
Sport and Recreation	17.7	18.1	14.6	11.8	32.3	29.9
Total	38.6	43.6	36.6	30.4	75.3	74.0
Personal and other Services						
Personal Services	28.9	20.5	39.9	38.2	68.8	58.7
Other Services	36.7	33.9	16.7	19.8	53.4	53.7
Private Households Employing Staff	*0.0	*0.0	*0.0	*0.0	*0.0	*0.0
Total	65.5	54.4	56.6	58.0	122.2	112.4
Total employed	1 719.5	1 713.1	1 324.9	1 344.7	3 044.4	3 057.7

(a) A change in the definition of employed persons has caused an estimated increase of 5,900 employed people in NSW from March 2001 to April 2001.

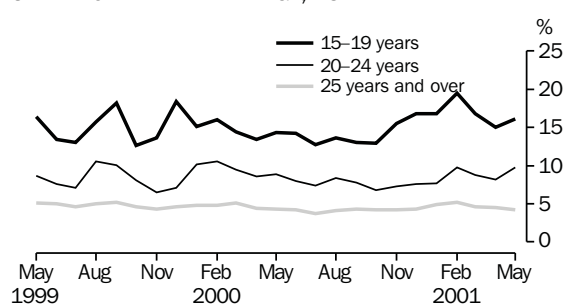
	Males		Females		Persons	
	May 2000	May 2001	May 2000	May 2001	May 2000	May 2001
<i>Major and sub-major occupation group</i>	'000	'000	'000	'000	'000	'000
Managers and administrators						
Generalist managers	46.0	43.6	*5.1	6.4	51.1	50.0
Specialist managers	73.5	92.5	25.1	33.4	98.5	125.8
Farmers and farm managers	54.3	49.5	17.7	14.4	72.0	63.9
Total	173.7	185.6	47.9	54.2	221.6	239.8
Professionals						
Science, building and engineering professionals	45.1	50.0	9.3	9.6	54.4	59.6
Business and information professionals	120.7	118.0	63.7	74.1	184.4	192.1
Health professionals	28.2	30.5	80.2	82.8	108.4	113.3
Education professionals	39.4	40.9	84.5	86.6	123.8	127.5
Social, arts and miscellaneous professionals	59.5	59.6	50.1	40.9	109.7	100.5
Total	292.8	299.0	287.9	294.0	580.7	593.0
Associate professionals						
Science, engineering and related associate professionals	37.5	28.5	8.7	8.8	46.2	37.4
Business and administrative associate professionals	65.6	71.1	49.9	56.2	115.5	127.4
Managing supervisors (sales and service)	85.2	81.8	40.9	49.6	126.1	131.4
Health and welfare associate professionals	*3.5	*3.6	8.5	11.8	12.0	15.4
Other associate professionals	19.0	19.9	5.9	9.3	24.9	29.3
Total	210.8	205.1	113.9	135.8	324.6	340.9
Tradespersons and related workers						
Mechanical and fabrication engineering tradespersons	71.1	66.2	*0.6	*0.4	71.7	66.6
Automotive tradespersons	40.5	44.5	*0.0	*0.8	40.5	45.2
Electrical and electronics tradespersons	64.5	56.6	*2.1	*1.0	66.6	57.6
Construction tradespersons	98.2	94.6	*2.5	*0.7	100.7	95.3
Food tradespersons	21.4	16.0	7.5	7.7	28.9	23.7
Skilled agricultural and horticultural workers	17.8	20.9	*1.3	*2.7	19.1	23.6
Other tradespersons and related workers	52.0	41.0	20.9	22.4	72.8	63.4
Total	365.5	339.7	35.0	35.6	400.4	375.3
Advanced clerical and service workers						
Secretaries and personal assistants	*1.7	*1.1	88.4	85.5	90.1	86.6
Other advanced clerical and service workers	15.6	20.3	32.9	47.1	48.5	67.4
Intermediate clerical, sales and service workers	163.2	148.3	397.6	385.6	560.8	533.9
Intermediate clerical workers	75.5	71.3	255.2	237.3	330.7	308.6
Intermediate sales and related workers	43.0	38.9	17.6	17.7	60.5	56.6
Intermediate service workers	44.7	38.1	124.8	130.5	169.6	168.6
Total	17.3	21.4	121.3	132.6	138.6	154.0
Intermediate production and transport workers						
Intermediate plant operators	57.1	52.5	*2.7	*2.1	59.8	54.6
Intermediate machine operators	19.4	16.7	14.1	8.1	33.5	24.8
Road and rail transport drivers	87.9	94.1	*5.7	*4.4	93.6	98.5
Other intermediate production and transport workers	60.8	67.6	15.8	11.0	76.6	78.6
Total	225.1	230.9	38.4	25.7	263.5	256.5
Elementary clerical, sales and service workers						
Elementary clerks	9.9	14.7	14.9	12.9	24.8	27.5
Elementary sales workers	61.3	65.1	159.8	161.5	221.1	226.6
Elementary service workers	19.0	23.2	12.9	12.1	31.9	35.3
Total	90.2	103.0	187.6	186.4	277.8	289.4
Labourers and related workers						
Cleaners	31.3	26.8	35.1	37.7	66.4	64.5
Factory labourers	43.8	45.4	26.4	22.6	70.2	68.0
Other labourers and related workers	105.7	107.9	33.9	34.5	139.6	142.4
Total	180.8	180.2	95.4	94.7	276.2	274.9
Total employed	1 719.5	1 713.1	1 324.9	1 344.7	3 044.4	3 057.7

(a) A change in the definition of employed persons has caused an estimated increase of 5,900 employed people in NSW from March 2001 to April 2001.

Month	Age group (years)						Total unemployed
	15-19	20-24	25-34	35-44	45-54	55 and over	
	'000	'000	'000	'000	'000	'000	'000
MALES							
2000							
May	19.4	16.5	18.9	21.3	13.6	7.1	96.8
2001							
February	27.4	19.4	28.2	21.4	18.0	9.9	124.4
March	20.9	19.1	24.9	19.6	16.2	7.7	108.5
April	20.3	18.6	23.6	20.8	12.5	9.3	105.1
May	20.1	23.0	23.2	16.9	15.7	9.0	107.8
FEMALES							
2000							
May	17.2	16.3	17.2	19.2	9.3	*2.2	81.4
2001							
February	23.5	17.2	16.2	19.4	12.6	*2.0	91.0
March	20.9	13.2	14.9	15.7	12.5	*3.8	81.0
April	17.5	11.2	19.1	19.4	12.7	*1.6	81.4
May	20.4	13.9	15.7	17.2	9.0	*2.9	79.1
PERSONS							
2000							
May	36.6	32.7	36.1	40.5	22.9	9.3	178.2
2001							
February	50.9	36.6	44.5	40.8	30.7	11.9	215.3
March	41.9	32.2	39.8	35.4	28.8	11.4	189.5
April	37.8	29.7	42.7	40.2	25.2	10.9	186.5
May	40.5	36.9	39.0	34.0	24.6	11.9	186.9

	Age group (years)						Total unemployment rate
	15–19	20–24	25–34	35–44	45–54	55 and over	
Month	%	%	%	%	%	%	
MALES							
2000							
May	15.2	8.5	4.2	4.7	3.6	3.3	5.3
2001							
February	20.7	10.0	6.4	4.7	4.8	4.8	6.9
March	16.8	9.8	5.6	4.3	4.3	3.6	6.0
April	15.8	9.8	5.3	4.6	3.3	4.1	5.8
May	16.1	11.6	5.2	3.7	4.1	4.1	5.9
FEMALES							
2000							
May	13.4	9.3	5.0	5.4	3.2	*1.9	5.8
2001							
February	18.3	9.6	4.7	5.6	4.3	*1.6	6.4
March	16.7	7.5	4.3	4.5	4.4	*3.0	5.7
April	14.2	6.4	5.3	5.4	4.3	*1.3	5.7
May	16.1	7.8	4.4	4.9	3.1	*2.5	5.6
PERSONS							
2000							
May	14.3	8.9	4.6	5.0	3.4	2.8	5.5
2001							
February	19.5	9.8	5.6	5.1	4.6	3.6	6.7
March	16.8	8.8	5.0	4.4	4.3	3.3	5.9
April	15.0	8.2	5.3	4.9	3.7	3.1	5.7
May	16.1	9.8	4.8	4.2	3.7	3.6	5.8

UNEMPLOYMENT RATE BY AGE, NSW



12

UNEMPLOYED PERSONS, INDUSTRY AND OCCUPATION OF LAST FULL-TIME JOB, NSW — MAY 2001

	<i>Males</i>	<i>Females</i>	<i>Persons</i>
Industry division			
Agriculture, forestry and fishing	*3.7	*1.8	*5.5
Mining	*0.4	—	*0.4
Manufacturing	7.7	*3.2	10.8
Construction	16.8	*0.4	17.2
Wholesale trade	*3.8	*0.3	*4.1
Retail trade	13.7	12.8	26.5
Accommodation, cafes and restaurants	*2.3	*5.3	7.6
Transport and storage	*2.6	*1.8	*4.4
Communication services	*2.9	*1.3	*4.2
Finance and insurance	*2.0	*2.3	*4.3
Property and business services	6.5	7.5	14.0
Government administration and defence	*2.3	*1.0	*3.3
Education	*0.4	*1.0	*1.5
Health and community services	*2.0	*3.8	*5.8
Cultural and recreational services	*1.5	*2.8	*4.4
Personal and other services	*2.5	*2.1	*4.5
Major occupation group			
Managers and administrators	*0.3	*1.0	*1.4
Professionals	*4.8	*2.8	7.6
Associate professionals	*2.4	*2.1	*4.5
Tradespersons and related workers	16.8	*1.3	18.1
Advanced clerical and service workers	*0.0	*2.6	*2.6
Intermediate clerical, sales and service workers	7.0	15.2	22.2
Intermediate production and transport workers	11.3	*1.7	13.0
Elementary clerical, sales and service workers	7.6	11.7	19.3
Labourers and related workers	21.0	9.0	30.0
Duration of unemployment			
Worked for two weeks or more in the previous two years	71.3	47.5	118.7
Worked for two weeks or more over two years ago	23.5	17.9	41.4
Never worked for two weeks or more	13.1	13.7	26.8
Total unemployed	107.8	81.4	186.9

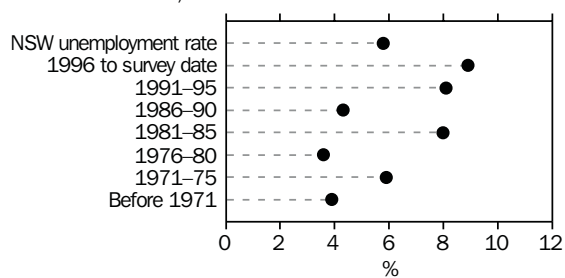
13

UNEMPLOYED PERSONS, DURATION OF UNEMPLOYMENT, NSW — MAY 2001

<i>Duration of unemployment (weeks)</i>	<i>Males</i>	<i>Females</i>	<i>Persons</i>
	'000	'000	'000
Under 4	17.6	15.6	33.2
4 and under 8	13.5	9.8	23.3
8 and under 13	13.5	10.8	24.3
13 and under 26	21.9	18.6	40.5
26 and under 52	12.1	9.9	22.0
<i>Total</i>	78.6	64.7	143.3
52 and over	29.2	14.4	43.6
52 and under 104	11.6	7.5	19.1
104 and over	17.6	6.9	24.5
Total employed	107.8	79.1	186.9
	weeks	weeks	weeks
<i>Average</i>	58.8	37.0	49.6

	<i>April 2001</i>	<i>May 2001</i>
	%	%
Birthplace		
Australia	5.5	5.7
Outside Australia	6.4	5.9
Main English speaking countries	6.0	5.1
Other countries	6.6	6.3
Period of arrival of overseas born		
Before 1971	3.7	3.9
1971-75	5.7	5.9
1976-80	5.5	3.6
1981-85	8.0	8.0
1986-90	5.4	4.3
1991-95	8.3	8.1
1996 to survey date	9.8	8.9
Total unemployment rate	5.7	5.8

UNEMPLOYMENT RATE BY PERIOD OF ARRIVAL OF
OVERSEAS BORN, NSW—MAY 2001



	Duration of unemployment (weeks)					Total unemployed persons	Average duration (weeks)
	Under 13	13 and under 26	26 and under 39	39 and under 104	104 and over		
2001	'000	'000	'000	'000	'000	'000	'000
15-19							
April	8.8	*4.2	*1.4	*2.3	*1.4	18.0	13.7
May	7.7	*5.1	*1.5	*3.2	*1.3	18.9	17.4
20-24							
April	12.0	*3.2	*2.2	*0.6	*3.8	21.9	13.0
May	14.4	*5.7	*2.3	*3.7	*2.2	28.3	13.9
25-34							
April	18.7	*4.4	*2.5	*2.7	7.6	36.0	13.0
May	16.5	*4.3	*3.4	*2.2	6.1	32.5	14.1
35-44							
April	12.5	*5.6	*5.4	*3.6	*4.0	31.1	20.0
May	7.5	7.6	*5.5	*2.1	*5.0	27.7	23.9
45 AND OVER							
April	8.5	*3.8	*5.2	*3.2	9.5	30.3	39.9
May	11.1	*4.4	*5.8	*3.5	7.1	31.9	28.0
TOTAL							
April	60.5	21.2	16.7	12.5	26.2	137.2	18.0
May	57.2	27.1	18.6	14.6	21.7	139.2	19.0

16

LABOUR FORCE STATUS, SYDNEY (MSR)

	<i>Employed</i>			<i>Unemployed</i>			<i>Labour force</i>	<i>Unemployment rate</i>	<i>Participation rate</i>
	<i>Full-time workers</i>	<i>Part-time workers</i>	<i>Total</i>	<i>Looking for full-time work</i>	<i>Looking for part-time work</i>	<i>Total</i>			
2001	'000	'000	'000	'000	'000	'000	'000	%	%
MALES									
April	983.0	139.5	1 122.5	55.7	12.7	68.3	1 190.8	5.7	73.4
May	978.8	149.4	1 128.2	51.1	7.4	58.6	1 186.8	4.9	73.1
MARRIED FEMALES									
April	302.3	214.7	517.0	11.2	5.9	17.2	534.2	3.2	57.7
May	298.4	218.8	517.2	12.0	5.4	17.3	534.5	3.2	57.2
ALL FEMALES									
April	553.8	344.5	898.3	28.7	20.1	48.7	947.1	5.1	56.5
May	553.0	343.4	896.4	28.9	16.8	45.7	942.2	4.9	56.1
PERSONS									
April	1 536.8	484.0	2 020.8	84.3	32.7	117.1	2 137.9	5.5	64.8
May	1 531.8	492.8	2 024.6	80.0	24.3	104.3	2 129.0	4.9	64.5

17

LABOUR FORCE STATUS, BALANCE OF NSW (MSR)

	<i>Employed</i>			<i>Unemployed</i>			<i>Labour force</i>	<i>Unemployment rate</i>	<i>Participation rate</i>
	<i>Full-time workers</i>	<i>Part-time workers</i>	<i>Total</i>	<i>Looking for full-time work</i>	<i>Looking for part-time work</i>	<i>Total</i>			
2001	'000	'000	'000	'000	'000	'000	'000	%	%
MALES									
April	497.8	93.8	591.6	33.4	*3.3	36.7	628.3	5.8	67.2
May	499.2	85.7	584.9	37.9	11.3	49.2	634.1	7.8	67.8
MARRIED FEMALES									
April	147.6	153.2	300.8	6.9	*4.3	11.2	312.0	3.6	55.1
May	153.1	145.8	298.9	7.6	*3.4	11.0	309.9	3.5	54.3
ALL FEMALES									
April	231.9	226.9	458.8	19.5	13.2	32.7	491.5	6.7	51.5
May	228.4	219.8	448.2	21.3	12.1	33.4	481.6	6.9	50.4
PERSONS									
April	729.7	320.6	1 050.3	52.9	16.5	69.4	1 119.8	6.2	59.3
May	727.6	305.5	1 033.1	59.2	23.4	82.6	1 115.7	7.4	59.0

	Males	Females	Persons
<i>Industry division and Major occupation group</i>	<i>'000</i>	<i>'000</i>	<i>'000</i>
SYDNEY (MSR)			
Industry			
Agriculture, forestry and fishing	8.4	6.9	15.3
Mining	*2.1	*0.3	*2.4
Manufacturing	161.4	70.8	232.2
Electricity, gas and water supply	10.8	*2.7	13.5
Construction	142.7	20.3	163.0
Wholesale trade	74.6	35.2	109.8
Retail trade	140.5	142.2	282.7
Accommodation, cafes and restaurants	47.0	47.9	94.9
Transport and storage	78.2	28.0	106.1
Communication services	40.1	12.0	52.2
Finance and insurance	62.4	69.5	131.9
Property and business services	167.7	145.1	312.8
Government administration and defence	33.9	24.0	57.9
Education	39.6	84.4	123.9
Health and community services	50.0	146.2	196.2
Cultural and recreational services	30.5	21.4	52.0
Personal and other services	38.3	39.6	77.9
Occupation			
Managers and administrators	106.1	35.6	141.7
Professionals	232.9	205.9	438.8
Associate professionals	150.2	93.0	243.1
Tradespersons and related workers	214.0	19.0	233.0
Advanced clerical and service workers	17.8	91.8	109.6
Intermediate clerical, sales and service workers	104.1	261.6	365.7
Intermediate production and transport workers	135.6	17.5	153.1
Elementary clerical, sales and service workers	73.1	119.1	192.2
Labourers and related workers	94.5	53.0	147.4
Total employed	1 128.2	896.4	2 024.6
BALANCE OF NSW (MSR)			
Industry			
Agriculture, forestry and fishing	85.9	32.4	118.3
Mining	12.7	*1.0	13.8
Manufacturing	102.0	27.4	129.4
Electricity, gas and water supply	7.1	*1.1	8.2
Construction	58.2	6.9	65.1
Wholesale trade	32.2	9.5	41.7
Retail trade	72.3	82.6	154.9
Accommodation, cafes and restaurants	23.9	33.8	57.7
Transport and storage	30.2	6.8	37.0
Communication services	10.4	*4.9	15.3
Finance and insurance	8.7	16.2	24.9
Property and business services	42.1	36.9	79.0
Government administration and defence	25.4	17.1	42.5
Education	25.1	50.2	75.3
Health and community services	19.5	94.0	113.4
Cultural and recreational services	13.1	8.9	22.0
Personal and other services	16.1	18.4	34.5
Occupation			
Managers and administrators	79.5	18.6	98.1
Professionals	66.1	88.0	154.1
Associate professionals	54.9	42.9	97.8
Tradespersons and related workers	125.7	16.6	142.3
Advanced clerical and service workers	*3.6	40.8	44.4
Intermediate clerical, sales and service workers	44.1	124.0	168.1
Intermediate production and transport workers	95.3	8.2	103.5
Elementary clerical, sales and service workers	29.9	67.3	97.2
Labourers and related workers	85.7	41.8	127.5
Total employed	584.9	448.2	1 033.1

	<i>Employed</i>	<i>Unemployed</i>	<i>Labour force</i>	<i>Unemployment rate</i>	<i>Participation rate</i>
<i>Month</i>	'000	'000	'000	%	%
INNER SYDNEY AND INNER WESTERN SYDNEY (SRs)					
MALES					
April	138.9	7.1	145.9	4.8	75.8
May	139.5	5.0	144.5	3.5	75.9
FEMALES					
April	121.9	5.4	127.3	4.2	65.5
May	122.6	4.6	127.2	3.6	65.4
PERSONS					
April	260.8	12.4	273.3	4.6	70.6
May	262.2	9.6	271.8	3.5	70.6
INNER SYDNEY (SR)					
MALES					
April	88.6	5.7	94.2	6.0	76.5
May	90.2	4.0	94.2	4.3	77.8
FEMALES					
April	84.5	*2.7	87.2	*3.1	69.0
May	81.3	*2.7	84.0	*3.2	68.2
PERSONS					
April	173.1	8.4	181.5	4.6	72.7
May	171.5	6.7	178.2	3.7	73.0
EASTERN SUBURBS (SR)					
MALES					
April	63.6	2.5	66.0	3.8	71.9
May	54.5	*1.4	55.9	*2.5	66.5
FEMALES					
April	53.0	3.1	56.1	5.5	57.0
May	52.1	*2.0	54.1	*3.7	56.5
PERSONS					
April	116.5	5.6	122.1	4.5	64.2
May	106.7	3.4	110.1	3.1	61.2
ST GEORGE — SUTHERLAND (SR)					
MALES					
April	118.1	4.3	122.4	3.5	73.4
May	117.9	5.6	123.5	4.6	72.7
FEMALES					
April	103.2	3.8	107.0	3.6	58.9
May	100.7	3.4	104.1	3.3	57.2
PERSONS					
April	221.3	8.1	229.4	3.5	65.8
May	218.5	9.1	227.6	4.0	64.7
CANTERBURY — BANKSTOWN (SR)					
MALES					
April	76.7	4.9	81.6	6.0	67.1
May	73.9	6.1	80.0	7.6	67.2
FEMALES					
April	46.9	3.7	50.6	7.3	41.9
May	50.8	*1.3	52.1	*2.6	42.4
PERSONS					
April	123.6	8.6	132.2	6.5	54.5
May	124.7	7.5	132.1	5.6	54.6
For footnotes see end of table.					continued...

	<i>Employed</i>	<i>Unemployed</i>	<i>Labour force</i>	<i>Unemployment rate</i>	<i>Participation rate</i>
<i>Month</i>	'000	'000	'000	%	%
FAIRFIELD — LIVERPOOL AND OUTER SOUTH WESTERN SYDNEY (SRs)					
MALES					
April	145.7	18.9	164.6	11.5	72.2
May	155.5	13.4	168.9	7.9	73.3
FEMALES					
April	115.6	13.4	129.0	10.4	54.5
May	114.2	12.3	126.5	9.7	54.0
PERSONS					
April	261.3	32.3	293.5	11.0	63.1
May	269.7	25.7	295.4	8.7	63.5
FAIRFIELD — LIVERPOOL (SR)					
MALES					
April	85.2	11.7	96.9	12.0	70.2
May	89.7	8.4	98.1	8.5	71.2
FEMALES					
April	64.0	8.6	72.6	11.8	50.1
May	61.9	8.0	69.9	11.5	48.9
PERSONS					
April	149.3	20.3	169.5	12.0	59.9
May	151.6	16.4	168.0	9.7	59.9
CENTRAL WESTERN SYDNEY (SR)					
MALES					
April	78.5	3.5	82.0	4.2	66.9
May	75.1	3.3	78.4	4.2	63.6
FEMALES					
April	51.1	3.3	54.4	6.1	47.3
May	53.1	3.4	56.5	6.1	48.3
PERSONS					
April	129.6	6.8	136.4	5.0	57.4
May	128.2	6.7	134.9	5.0	56.1
OUTER WESTERN SYDNEY (SR) AND BLACKTOWN(C)					
MALES					
April	160.2	12.0	172.3	7.0	76.4
May	160.9	8.7	169.7	5.2	75.0
FEMALES					
April	124.8	4.7	129.5	3.6	57.9
May	122.0	5.7	127.6	4.4	55.6
PERSONS					
April	285.1	16.7	301.7	5.5	67.2
May	282.9	14.4	297.3	4.8	65.2
LOWER NORTHERN SYDNEY (SR)					
MALES					
April	75.7	*2.7	78.3	*3.4	76.0
May	84.4	*2.5	86.9	*2.9	77.6
FEMALES					
April	66.3	3.2	69.5	4.6	58.9
May	69.7	3.6	73.3	4.8	60.8
PERSONS					
April	141.9	5.9	147.8	4.0	66.9
May	154.1	6.1	160.2	3.8	68.9
For footnotes see end of table.					continued...

<i>Month</i>	<i>Employed</i> '000	<i>Unemployed</i> '000	<i>Labour force</i> '000	<i>Unemployment rate</i> %	<i>Participation rate</i> %
HORNSBY — KU-RING-GAI (SR) AND BAULKHAM HILLS (A)					
MALES					
April	125.7	4.3	130.0	3.3	78.7
May	124.9	6.2	131.1	4.7	79.5
FEMALES					
April	102.1	4.5	106.6	4.2	61.8
May	101.0	3.8	104.8	3.7	62.5
PERSONS					
April	227.8	8.8	236.6	3.7	70.1
May	225.9	10.0	235.9	4.2	71.0
NORTHERN BEACHES (SR)					
MALES					
April	69.6	*1.7	71.3	*2.4	76.9
May	69.5	*1.1	70.6	*1.5	77.3
FEMALES					
April	56.5	*0.4	56.9	*0.6	58.0
May	56.0	*1.4	57.4	*2.4	59.0
PERSONS					
April	126.1	*2.0	128.2	*1.6	67.2
May	125.5	*2.4	127.9	*1.9	67.9
GOSFORD — WYONG (SR)					
MALES					
April	69.8	6.6	76.3	8.6	67.6
May	72.0	5.2	77.2	6.7	68.4
FEMALES					
April	57.0	3.3	60.3	5.4	50.9
May	54.3	4.2	58.5	7.2	50.1
PERSONS					
April	126.8	9.9	136.7	7.2	59.1
May	126.3	9.4	135.7	6.9	59.1
HUNTER (SR)					
MALES					
April	138.1	13.7	151.8	9.0	64.9
May	141.9	14.8	156.6	9.4	67.2
FEMALES					
April	108.1	12.7	120.8	10.5	51.7
May	107.9	13.6	121.4	11.2	51.4
PERSONS					
April	246.2	26.4	272.7	9.7	58.3
May	249.8	28.3	278.1	10.2	59.2
NEWCASTLE (SRS)					
MALES					
April	113.7	11.7	125.3	9.3	64.9
May	114.2	12.4	126.5	9.8	66.6
FEMALES					
April	108.1	12.7	120.8	10.5	51.7
May	107.9	13.6	121.4	11.2	51.4
PERSONS					
April	206.4	23.5	229.9	10.2	58.6
May	206.1	24.9	231.0	10.8	59.3
For footnotes see end of table.					continued...

	<i>Employed</i>	<i>Unemployed</i>	<i>Labour force</i>	<i>Unemployment rate</i>	<i>Participation rate</i>
<i>Month</i>	'000	'000	'000	%	%
ILLAWARRA AND SOUTH EASTERN (SRs)(b)					
Males					
April	145.3	6.8	152.1	4.5	66.2
May	147.3	10.1	157.4	6.4	68.1
Females					
April	115.6	4.9	120.5	4.1	50.3
May	109.7	5.6	115.3	4.9	49.1
Persons	—	—	—	—	—
ILLAWARRA (SR)					
Males					
April	101.5	4.9	106.4	4.6	66.2
May	102.4	7.2	109.6	6.5	67.5
Females					
April	82.1	*3.2	85.3	*3.8	50.5
May	79.7	3.9	83.6	4.6	50.6
Persons					
April	183.6	8.1	191.7	4.2	58.2
May	182.1	11.0	193.1	5.7	58.9
WOLLONGONG (SRS)					
Males					
April	75.5	3.0	78.5	3.8	67.3
May	79.5	5.3	84.7	6.2	71.5
Females					
April	58.3	*1.9	60.3	*3.2	49.3
May	59.0	3.9	62.8	6.2	51.0
Persons					
April	133.8	4.9	138.8	3.6	58.1
May	138.4	9.1	147.6	6.2	61.1
RICHMOND — TWEED AND MID-NORTH COAST (SRs)					
Males					
April	105.0	8.0	113.0	7.0	63.8
May	96.4	11.2	107.7	10.4	62.1
Females					
April	87.9	6.8	94.7	7.2	51.2
May	83.2	7.2	90.4	7.9	47.4
Persons					
April	192.9	14.8	207.7	7.1	57.4
May	179.7	18.4	198.1	9.3	54.4
NORTHERN, FAR WEST — NORTH WESTERN AND CENTRAL WEST (SRs)					
Males					
April	127.4	*4.1	131.5	*3.1	71.1
May	121.4	6.7	128.0	5.2	68.5
Females					
April	89.5	*4.1	93.6	*4.4	49.5
May	90.4	*4.5	94.9	*4.7	50.9
Persons					
April	216.8	8.2	225.1	3.7	60.2
May	211.8	11.1	222.9	5.0	59.7
For footnotes see end of table.					continued...

	<i>Employed</i>	<i>Unemployed</i>	<i>Labour force</i>	<i>Unemployment rate</i>	<i>Participation rate</i>
<i>Month</i>	'000	'000	'000	%	%
MURRAY — MURRUMBIDGEE (SR)					
MALES					
April	75.8	*4.2	79.9	*5.2	73.4
May	77.8	6.5	84.3	7.7	76.0
FEMALES					
April	57.7	*4.1	61.8	*6.6	57.5
May	57.0	*2.6	59.6	*4.4	55.7
PERSONS					
April	133.5	8.2	141.8	5.8	65.5
May	134.8	9.1	143.9	6.3	66.0
AUSTRALIAN CAPITAL TERRITORY AND SOUTH EASTERN (SRs)(b)					
MALES					
April	131.5	7.3	138.8	5.3	73.8
May	132.3	9.5	141.8	6.7	75.4
FEMALES					
April	112.9	6.1	119.0	5.1	61.0
May	109.9	4.8	114.7	4.2	59.0
PERSONS					
April	244.4	13.4	257.8	5.2	67.3
May	242.2	14.3	256.5	5.6	67.0

(a) While the Labour Force Survey is designed primarily to produce reliable estimates at the national and State/Territory level, it also delivers estimates for a number of regions within States. As with national and State estimates, regional labour force estimates are subject to sampling error. Since estimates for regions are components of corresponding estimates at the State level — and are thus based on a considerably smaller sample size — they are subject to higher relative standard error. Care should therefore be taken in interpretation of regional estimates, particularly month to month movements. Tables of standard errors are included in the Technical Note on pages 61–63 of this publication.

(b) Estimates for the South Eastern (SR) are not published separately. Data for the South Eastern (SR) are included in ACT and South Eastern (SRs) and in Illawarra and South Eastern (SRs).

Month	Employed			Unemployed			Labour force	Not in labour force	Civilian population aged 15 and over	Unemployment rate	Participation rate
	Full-time workers	Part-time workers	Total	Looking for full-time work	Looking for part-time work	Total					
	'000	'000		'000	'000						
MALES											
May 1997	69.7	11.5	81.2	3.7	2.0	5.7	86.9	24.7	111.6	6.6	77.9
1998	70.1	10.6	80.7	5.1	1.4	6.5	87.2	26.0	113.1	7.4	77.1
1999	69.8	13.3	83.1	3.9	1.9	5.8	88.9	25.7	114.6	6.5	77.6
2000											
March	74.1	13.2	87.3	3.9	1.5	5.4	92.7	24.3	117.0	5.8	79.2
April	73.1	14.1	87.2	3.7	1.4	5.2	92.4	25.2	117.5	5.6	78.6
May	74.0	13.0	87.0	3.6	1.4	5.0	92.0	26.1	118.0	5.4	77.9
2001											
February	76.3	10.6	86.9	4.0	1.7	5.7	92.6	26.4	119.0	6.2	77.8
March	76.0	12.2	88.2	3.4	1.3	4.7	92.9	26.1	119.0	5.1	78.1
April	73.8	13.9	87.7	4.2	1.2	5.4	93.1	26.0	119.1	5.8	78.2
May	74.2	13.2	87.4	5.1	1.5	6.6	94.0	25.3	119.2	7.0	78.8
MARRIED FEMALES											
May 1997	28.8	16.1	44.9	1.3	*0.6	1.8	46.7	21.2	67.9	3.9	68.8
1998	26.9	16.5	43.4	*0.9	*0.9	1.8	45.2	21.8	67.0	4.0	67.5
1999	26.6	16.9	43.5	*1.0	*0.4	1.4	45.0	24.9	69.9	3.2	64.3
2000											
March	28.8	14.6	43.4	*0.9	*0.2	1.1	44.5	19.7	64.2	2.5	69.4
April	28.7	15.7	44.3	*0.8	*0.5	1.2	45.6	19.6	65.2	2.7	69.9
May	29.2	16.3	45.4	*0.4	*0.5	*1.0	46.4	19.0	65.4	*2.1	71.0
2001											
February	28.4	17.6	46.1	*0.6	*0.4	*1.0	47.0	22.4	69.5	*2.1	67.7
March	29.4	18.8	48.2	*0.8	*0.2	*1.0	49.2	21.6	70.8	*2.0	69.4
April	29.3	18.9	48.3	*0.8	*0.3	1.1	49.3	23.2	72.6	2.2	68.0
May	29.9	17.9	47.9	*0.7	*0.1	*0.8	48.7	22.3	70.9	*1.6	68.6
ALL FEMALES											
May 1997	47.2	29.2	76.3	3.3	1.8	5.1	81.4	39.4	120.7	6.2	67.4
1998	47.1	28.4	75.4	2.4	2.2	4.6	80.0	41.0	121.1	5.7	66.1
1999	47.5	28.7	76.2	2.2	2.0	4.2	80.3	41.6	122.0	5.2	65.9
2000											
March	52.6	24.9	77.5	2.3	1.8	4.1	81.6	41.6	123.2	5.1	66.2
April	52.4	26.3	78.6	2.0	1.7	3.7	82.3	41.1	123.5	4.5	66.7
May	52.1	27.5	79.6	2.7	1.6	4.4	84.0	39.7	123.7	5.2	67.9
2001											
February	50.3	28.5	78.8	2.3	2.0	4.3	83.1	41.3	124.4	5.2	66.8
March	49.7	31.0	80.7	2.3	1.7	4.1	84.8	39.7	124.5	4.8	68.1
April	48.5	30.9	79.4	2.6	1.8	4.4	83.8	40.9	124.6	5.2	67.2
May	50.7	29.2	79.9	2.1	*0.9	3.0	83.0	41.8	124.7	3.7	66.5
PERSONS											
May 1997	116.9	40.7	157.5	7.0	3.8	10.8	168.3	64.0	232.3	6.4	72.5
1998	117.1	39.0	156.1	7.5	3.6	11.1	167.2	67.0	234.2	6.6	71.4
1999	117.3	42.0	159.3	6.1	3.9	10.0	169.3	67.3	236.6	5.9	71.5
2000											
March	126.7	38.1	164.8	6.3	3.3	9.5	174.3	65.9	240.3	5.5	72.6
April	125.5	40.4	165.8	5.7	3.1	8.8	174.7	66.3	241.0	5.1	72.5
May	126.1	40.5	166.6	6.3	3.0	9.3	175.9	65.8	241.7	5.3	72.8
2001											
February	126.6	39.1	165.7	6.3	3.7	10.0	175.7	67.7	243.4	5.7	72.2
March	125.7	43.2	168.9	5.8	3.0	8.8	177.7	65.8	243.5	4.9	73.0
April	122.3	44.8	167.1	6.7	3.0	9.8	176.9	66.8	243.7	5.5	72.6
May	124.9	42.4	167.3	7.2	2.4	9.6	176.9	67.0	243.9	5.4	72.5

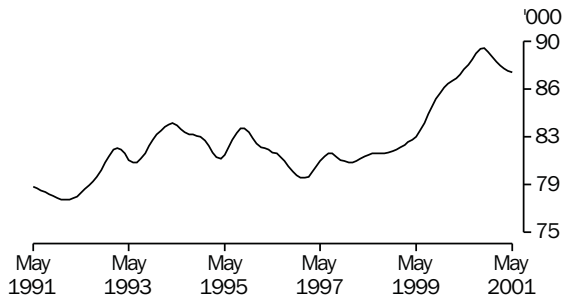
	<i>Employed</i>	<i>Unemployed</i>	<i>Labour force</i>	<i>Unemployment rate</i>	<i>Participation rate</i>
<i>Month</i>	'000	'000	'000	%	%
MALES					
May					
1997	80.6	6.5	87.1	7.5	78.1
1998	81.1	6.8	87.9	7.7	77.8
1999	82.5	5.8	88.3	6.6	77.0
2000					
March	87.1	5.2	92.3	5.6	78.9
April	87.4	5.1	92.5	5.5	78.7
May	87.8	5.0	92.7	5.4	78.6
June	88.2	4.8	93.0	5.2	78.5
July	88.6	4.7	93.3	5.1	78.6
August	89.1	4.6	93.7	4.9	78.8
September	89.4	4.6	94.0	4.9	79.0
October	89.5	4.6	94.1	4.9	79.1
November	89.2	4.7	93.9	5.0	78.9
December	88.8	4.7	93.5	5.1	78.6
2001					
January	88.4	4.8	93.2	5.2	78.4
February	88.1	5.0	93.1	5.3	78.2
March	87.9	5.2	93.1	5.6	78.2
April	87.7	5.5	93.2	5.9	78.3
May	87.6	5.8	93.5	6.2	78.5
FEMALES					
May					
1997	75.1	5.0	80.2	6.3	66.4
1998	75.3	4.3	79.6	5.4	65.7
1999	76.2	3.5	79.7	4.4	65.3
2000					
March	78.9	3.6	82.5	4.3	66.9
April	78.9	3.6	82.5	4.3	66.8
May	79.2	3.6	82.7	4.3	66.9
June	79.6	3.5	83.1	4.2	67.1
July	80.3	3.3	83.7	4.0	67.4
August	81.0	3.2	84.2	3.8	67.8
September	81.5	3.0	84.5	3.6	68.0
October	81.6	3.0	84.5	3.5	68.0
November	81.4	3.0	84.4	3.6	67.9
December	81.0	3.1	84.1	3.7	67.7
2001					
January	80.6	3.3	83.9	3.9	67.4
February	80.3	3.4	83.7	4.1	67.3
March	80.0	3.5	83.5	4.2	67.1
April	79.8	3.6	83.4	4.3	66.9
May	79.5	3.6	83.2	4.4	66.7
(a) For footnotes see end of table.					continued...

	<i>Employed</i>	<i>Unemployed</i>	<i>Labour force</i>	<i>Unemployment rate</i>	<i>Participation rate</i>
<i>Month</i>	'000	'000	'000	%	%
PERSONS					
May					
1997	155.8	11.5	167.3	6.9	72.0
1998	156.4	11.1	167.5	6.6	71.6
1999	158.7	9.3	168.0	5.5	71.0
2000					
March	166.0	8.8	174.8	5.0	72.7
April	166.4	8.7	175.1	5.0	72.6
May	166.9	8.6	175.5	4.9	72.6
June	167.8	8.3	176.1	4.7	72.7
July	168.9	8.0	177.0	4.5	72.9
August	170.1	7.8	177.9	4.4	73.2
September	170.9	7.6	178.5	4.3	73.4
October	171.0	7.6	178.6	4.3	73.4
November	170.6	7.7	178.3	4.3	73.3
December	169.8	7.9	177.7	4.4	73.0
2001					
January	169.0	8.1	177.1	4.6	72.8
February	168.4	8.4	176.8	4.7	72.6
March	167.9	8.7	176.6	4.9	72.5
April	167.5	9.1	176.6	5.2	72.5
May	167.2	9.5	176.6	5.4	72.5

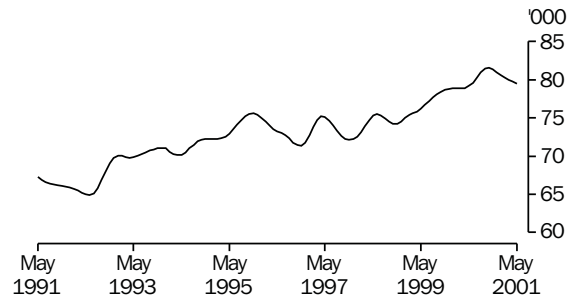
(a) See Explanatory Notes 29 and 30.

TREND SERIES, ACT(a)

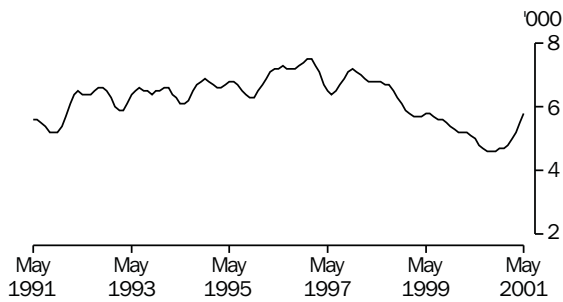
EMPLOYED MALES



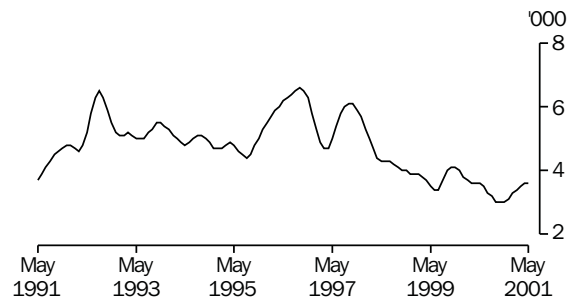
EMPLOYED FEMALES



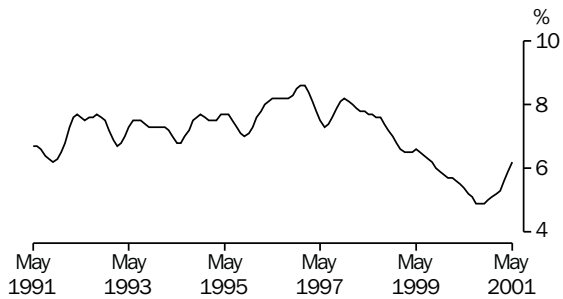
UNEMPLOYED MALES



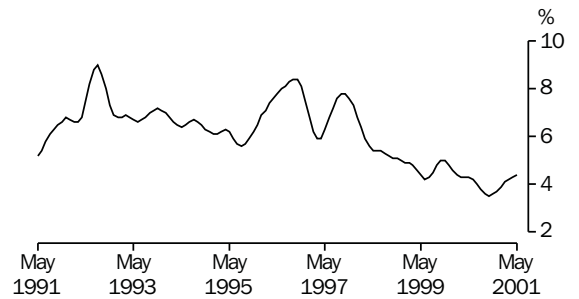
UNEMPLOYED FEMALES



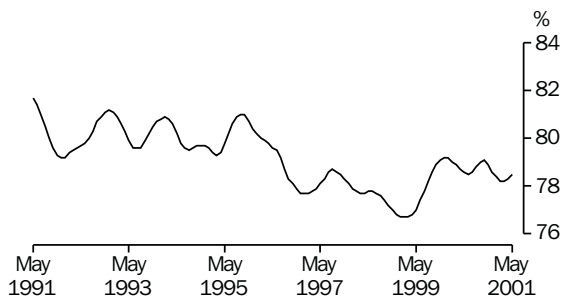
MALE UNEMPLOYMENT RATE



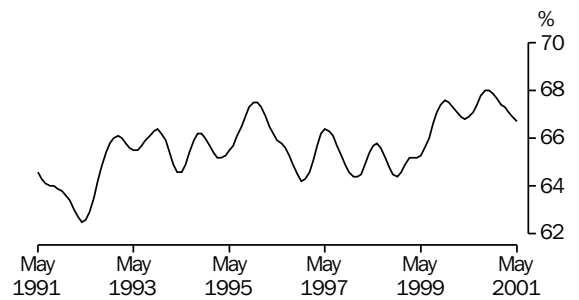
FEMALE UNEMPLOYMENT RATE



MALE PARTICIPATION RATE



FEMALE PARTICIPATION RATE



(a) Comparisons between these graphs should not be made, as their vertical axes are not similarly scaled.

	Persons						
	Females			Age group (years)			Total
	Males	Married	Total	15–19	20–24	25 and over	
	'000	'000	'000	'000	'000	'000	'000
Employed							
Full-time workers	74.2	29.9	50.7	2.9	14.4	107.7	124.9
Part-time workers	13.2	17.9	29.2	9.6	5.9	26.9	42.4
Total	87.4	47.8	79.9	12.5	20.3	134.7	167.3
Unemployed							
Looking for full-time work	5.1	*0.7	2.1	*0.9	1.5	4.7	7.2
Looking for part-time work	1.5	*0.1	*0.9	1.7	*0.2	*0.5	2.4
Total	6.6	*0.8	3.0	2.6	1.7	5.3	9.6
Labour force	94.0	48.7	83.0	15.1	22.0	139.9	176.9
Not in labour force	25.3	22.3	41.8	8.9	4.8	53.4	67.0
Civilian population	119.2	70.9	124.7	23.9	26.8	193.2	243.9
	%	%	%	%	%	%	%
Unemployment rate							
Looking for full-time work	6.4	*2.3	4.0	*24.7	9.5	4.2	5.4
Total	7.0	*1.6	3.7	17.5	7.7	3.8	5.4
Participation rate	78.8	68.6	66.5	63.0	82.1	72.4	72.5
Employment/population ratio	73.3	67.5	64.1	52.0	75.7	69.6	68.6
	no.	no.	no.	no.	no.	no.	no.
Average weekly hours worked by employed persons	38.2	31.4	30.7	18.3	32.7	36.4	34.6
Average duration of unemployment (weeks)	50.5	*16.9	26.6	22.0	50.9	50.9	43.0

	Employed	Unemployed	Not in labour force	Labour force	Civilian population aged 15 and over
	'000	'000	'000	'000	'000
<i>Birthplace and year of arrival</i>					
Born in Australia	128.7	7.9	43.0	136.6	179.6
Born outside Australia					
Arrived before 1976	20.0	*0.8	14.8	20.8	35.6
Arrived 1976–80	3.1	*0.0	*0.4	3.1	3.6
Arrived 1981–85	4.5	*0.1	1.4	4.6	6.0
Arrived 1986–90	4.3	*0.5	1.4	4.7	6.1
Arrived 1991–95	2.2	*0.1	1.3	2.3	3.6
Arrived 1996 to survey date	4.5	*0.3	2.7	4.7	7.4
Total	38.6	1.7	22.1	40.3	62.4
<i>Main English speaking countries</i>					
Arrived before 1976	10.3	*0.4	4.7	10.7	15.3
Arrived 1976–80	2.1	*0.0	*0.3	2.1	2.3
Arrived 1981–85	1.6	*0.0	*0.3	1.6	1.9
Arrived 1986–90	1.3	*0.4	*0.7	1.7	2.4
Arrived 1991–95	*0.8	*0.0	*0.2	*0.8	*1.0
Arrived 1996 to survey date	1.7	*0.0	*0.1	1.7	1.8
Total	17.8	*0.8	6.3	18.5	24.8
<i>Other than Main English speaking countries</i>					
Arrived before 1976	9.7	*0.4	10.2	10.1	20.3
Arrived 1976–80	1.1	*0.0	*0.2	1.1	1.3
Arrived 1981–85	2.9	*0.1	1.2	2.9	4.1
Arrived 1986–90	2.9	*0.1	*0.7	3.0	3.8
Arrived 1991–95	1.4	*0.1	1.1	1.5	2.6
Arrived 1996 to survey date	2.8	*0.3	2.5	3.1	5.6
Total	20.8	*1.0	15.8	21.8	37.6
Total	167.3	9.6	65.1	176.9	242.0

Industry division	Males		Females		Persons	
	May 2000	May 2001	May 2000	May 2001	May 2000	May 2001
	'000	'000	'000	'000	'000	'000
Industry						
Agriculture, forestry and fishing	*0.6	*0.7	*0.3	*0.3	*0.9	*1.0
Mining	*0.0	*0.0	*0.0	*0.0	*0.0	*0.0
Manufacturing	4.4	3.2	2.1	2.5	6.4	5.7
Electricity, gas and water supply	*0.5	*0.9	*0.3	*0.4	*0.8	1.3
Construction	9.4	8.6	1.1	1.3	10.6	9.9
Wholesale trade	2.9	2.1	1.5	*1.0	4.4	3.1
Retail trade	10.7	10.8	9.8	10.0	20.6	20.8
Accommodation, cafes and restaurants	4.1	3.5	4.1	3.7	8.2	7.2
Transport and storage	2.8	3.4	1.8	1.2	4.5	4.6
Communication services	1.6	2.1	1.2	*0.5	2.8	2.5
Finance and insurance	2.1	2.6	2.2	2.3	4.3	4.9
Property and business services	13.4	14.0	7.4	10.4	20.7	24.4
Government administration and defence	19.1	18.0	18.5	17.8	37.6	35.8
Education	4.4	5.2	10.6	9.3	15.0	14.5
Health and community services	3.7	3.9	12.0	13.1	15.7	17.1
Cultural and recreational services	3.2	4.0	3.3	3.3	6.6	7.3
Personal and other services	4.0	4.4	3.1	2.9	7.1	7.3
Total employed	86.9	87.4	79.2	79.9	166.1	167.3

(a) A change in the definition of employed persons has caused an estimated increase of 100 employed people in ACT from March 2001 to April 2001.

Major occupation group	May 2000			May 2001		
	Males	Females	Persons	Males	Females	Persons
	'000	'000	'000	'000	'000	'000
Occupation						
Managers and administrators	9.9	4.4	14.3	9.6	5.4	15.0
Professionals	23.0	20.5	43.6	25.1	22.0	47.1
Associate professionals	12.7	10.8	23.5	13.0	9.2	22.2
Tradespersons and related workers	13.2	1.5	14.7	13.6	1.2	14.8
Advanced clerical and service workers	*0.6	5.2	5.8	*0.5	6.2	6.6
Intermediate clerical, sales and service workers	9.5	22.7	32.2	10.4	23.7	34.0
Intermediate production and transport workers	5.3	*0.8	6.1	5.6	*0.9	6.5
Elementary clerical, sales and service workers	6.5	9.6	16.2	6.0	9.6	15.6
Labourers and related workers	5.0	2.5	7.4	4.5	2.7	7.2
Total employed	85.7	78.2	163.9	88.1	80.8	169.0

(a) A change in the definition of employed persons has caused an estimated increase of 100 employed people in ACT from March 2001 to April 2001.

Month	52 weeks and under 104			104 weeks and over			Total			Long-term unemployment as a proportion of total unemployment		
	Males	Females	Persons	Males	Females	Persons	Males	Females	Persons	Males	Females	Persons
	'000	'000	'000	'000	'000	'000	'000	'000	'000	%	%	%
2001												
April	*0.3	*0.2	*0.5	*0.8	*0.3	1.1	1.1	*0.5	1.6	20.4	11.4	16.3
May	*0.4	*0.0	*0.4	1.2	*0.2	1.4	1.5	*0.2	1.8	22.7	6.7	18.8

EXPLANATORY NOTES

INTRODUCTION

1 This publication contains estimates of the labour force derived from the Labour Force Survey (LFS) component of the monthly population survey, which is conducted on a sample basis throughout Australia.

THE POPULATION SURVEY

2 This survey consists of the LFS and, in most months, one or more supplementary topics. The survey is based on a multi-stage area sample of private dwellings (houses, flats, etc.) and non-private dwellings (hotels, motels, etc.) and covers 1 in 300 of the population of NSW. The information is obtained from the occupants of selected dwellings by specially trained interviewers. The interviews are generally conducted during the two weeks beginning on the Monday between the 6th and 12th of each month. The information obtained relates to the week before the interview (i.e. the reference week).

TELEPHONE INTERVIEWING

3 The ABS has introduced the use of telephone interviewing into the LFS. Households selected for the LFS are interviewed each month for eight months, with one-eighth of the sample being replaced each month. The first interview is conducted face-to-face with subsequent interviews conducted by telephone (if acceptable to the respondent). Telephone interviewing was phased in from August 1996 to February 1997.

SCOPE

4 The LFS includes all persons aged 15 years and over, except:

- members of the permanent defence forces;
- certain diplomatic personnel of overseas governments, customarily excluded from census and estimated populations;
- overseas residents in Australia; and
- members of non-Australian defence forces (and their dependants) stationed in Australia.

SURVEY SAMPLE REDESIGN

5 The LFS sample was reselected using information collected in the 1996 Census of Population and Housing. The new sample was phased in over the eight-month period from September 1997 to April 1998.

6 For further details, see *Information Paper: Labour Force Survey Sample Design* (Cat. no. 6269.0).

POPULATION BENCHMARKS

7 LFS estimates are calculated in such a way as to add up to independent estimates of the civilian population aged 15 years and over (population benchmarks). From February 1999, labour force estimates have been compiled using benchmarks based on the results of the 1996 Census of Population and Housing. Small revisions were made to many of the historical estimates from January 1995 to January 1999.

DEFINITIONS

8 The labour force category to which a person is assigned depends on the actual activity undertaken during the reference week (i.e. whether working, looking for work, etc.). The following definitions, which conform closely to the international standard definitions specified by the International Labour Office (ILO), relate only to those persons within the scope of the survey.

9 *Employed persons* comprise civilians aged 15 years and over who, during the reference week:

- worked for one hour or more for pay, profit, commission or payment in kind (including employees, employers and own account workers) in a job or business, or on a farm; or
- worked for one hour or more without pay in a family business or on a farm (i.e. contributing family workers); or
- were employees who had a job but were not at work and were: on paid leave; on leave without pay for less than four weeks up to the end of the reference week; stood down without pay because of bad weather or plant breakdown at their place of employment for less than four weeks up to the end of the reference week; on strike or locked out; on workers' compensation and expected to be returning to their job; or receiving wages or salary while undertaking full-time study; or
- were employers, own account workers or contributing family workers who had a job, business or farm, but were not at work.

10 Prior to April 1986, contributing family workers who worked for 1–14 hours were excluded from the category of employed persons.

11 Employed persons can be classified into:

- *full-time workers*, i.e. those who usually worked 35 hours or more a week (in all jobs) and those who, although usually part-time workers, worked 35 hours or more during the reference week; and
- *part-time workers*, i.e. those who usually worked less than 35 hours a week and who did so during the reference week.

12 *Unemployed persons* are those aged 15 years and over who were not employed during the reference week, and:

- had actively looked for full-time or part-time work at any time in the four weeks up to the end of the reference week, and:
- were available for work in the reference week, or would have been available except for temporary illness (i.e. lasting for less than four weeks to the end of the reference week); or
- were waiting to start a new job within four weeks from the end of the reference week and would have started in the reference week if the job had been available then; or

- were waiting to be called back to a full-time or part-time job from which they had been stood down without pay for less than four weeks up to the end of the reference week (including the whole of the reference week) for reasons other than bad weather or plant breakdown.

13 *Actively looking for work* includes writing, telephoning or applying in person to an employer for work; answering an advertisement for a job; checking factory notice-boards or the touchscreens at the Centrelink offices; being registered with Centrelink as a jobseeker; checking or registering with any other employment agency; advertising or tendering for work; and contacting friends or relatives.

14 *The unemployment rate* for any group is the number of unemployed persons expressed as a percentage of the labour force in the same group.

15 The *labour force* comprises persons who were employed or unemployed as defined above.

16 *Long-term unemployed* comprises persons unemployed for a period of 52 weeks or more.

17 *Persons not in the labour force* are those who, during the reference week, were not in the categories employed or unemployed as defined above.

18 *The participation rate* for any group is the labour force expressed as a percentage of the civilian population aged 15 years and over in the same group.

19 *Duration of unemployment* is the period from the time the person began looking for work or was stood down to the end of the reference week.

20 *Unemployed persons classified by industry and occupation.* Unemployed persons who had worked full-time for two weeks or more in the last two years are classified according to the industry and occupation of their most recent full-time job.

21 *Industry classification.* From August 1994, LFS industry data have been classified according to the *Australian and New Zealand Standard Industrial Classification (ANZSIC), 1993* (Cat. no. 1292.0).

22 *Occupation classification.* From August 1996, occupation data have been classified according to the *Australian Standard Classification of Occupations (ASCO), Second Edition* (Cat. no. 1220.0).

23 *Marital status.* In the LFS, persons are classified as married or not married. Persons are classified as married if they are reported as being married (including de facto) and their spouse was a usual resident of the household at the time of the survey.

DEFINITIONS *continued*

24 *Persons attending school or a tertiary educational institution.*

Persons attending school comprise those aged 15–19 years who, during the reference week, were enrolled full-time at secondary or high schools. Persons attending a tertiary educational institution comprise those aged 15–24 years who were enrolled full-time at universities, other institutions of higher education, TAFE colleges and theological colleges.

25 *Employment/population ratio.* For any group, the number of employed persons expressed as a percentage of the civilian population aged 15 years and over in the same group.

STATISTICAL AREAS

26 The regional structure for NSW used in tables 16–19 is based on the Statistical Region structure of the *Australian Standard Geographical Classification (ASGC)* (Cat. no. 1216.0).

27 Changes were made to labour force regions in NSW from September 1997. Blacktown–Baulkham Hills SR was split up with Blacktown being merged with Outer Western Sydney SR to form Outer Western Sydney SR and Blacktown (C) and Baulkham Hills being merged with Hornsby–Ku-ring-gai SR to form Hornsby–Ku-ring-gai SR and Baulkham Hills (A). In addition, Northern, Far West–North Western and Central West SRs now include the Far West Statistical Division, previously excluded. This has resulted in a series break in the data for this area.

28 For further details, see *Information Paper: Regional Labour Force Statistics, September 1997* (Cat. no. 6262.0).

SEASONAL ADJUSTMENT AND TREND ESTIMATION

29 Seasonal adjustment is a means of removing the estimated effects of normal seasonal variation from the series so that the effects of other influences on the series can be more clearly recognised.

30 Smoothing seasonally adjusted series produces a measure of the underlying trend by reducing the impact of the irregular component of the series. The trend estimates are derived by applying a 13-term Henderson-weighted moving average to the respective seasonally adjusted series. While this smoothing technique enables estimates to be produced which include the latest month, it does result in revisions to the most recent months as additional observations become available.

31 Seasonally adjusted series for NSW appear in table 2. Trend estimates for NSW and ACT appear in tables 2 and 21 respectively. Seasonally adjusted data is not available for the ACT.

RELIABILITY OF THE ESTIMATES

32 Estimates are subject to sampling and non-sampling errors. See the Technical note on pages 58–60 for more information.

RELATED PUBLICATIONS

33 Users may also wish to refer to the following related publications which are available from ABS Bookshops:

- *Australian Capital Territory at a Glance*, (Cat. no. 1314.8), issued annually.
- *Australian Capital Territory Business Indicators*, (Cat. no. 1303.8), issued monthly.
- *Australian Capital Territory Statistical Summary*, (Cat. no. 1307.8), issued annually.
- *Information Paper: Labour Force Survey — Sample Design*, (Cat. no. 6269.0).
- *Information Paper: Regional Labour Force Statistics, September 1997*, (Cat. no. 6262.0).
- *Labour Force, Australia, Preliminary*, (Cat. no. 6202.0), issued monthly.
- *Labour Force, Australia*, (Cat. no. 6203.0), issued monthly.

ADDITIONAL DATA

34 The ABS can also make available information which is not published. In general, a charge is made for providing unpublished information.

ROUNDING

35 Figures have been rounded and discrepancies may occur between sums of the component items and the totals shown.

APPENDIX

SUPPLEMENTARY TOPICS

Although emphasis in the population survey is placed on the regular collection of data on demographic and labour force characteristics, supplementary and special surveys of particular aspects of the labour force are carried out from time to time. The data are available in publication form, by subscription or on request.

CATALOGUE/ PRODUCT NO.	TITLE OF PUBLICATION/STANDARD DATA SERVICE	PRICE(a) \$
6206.0	Labour Force Experience, Australia, February 1999	19.50
6209.0	Labour Mobility, February 2000	21.00
6220.0	Persons not in the Labour Force, Australia, September 2000	21.00
6222.0	Job Search Experience of Unemployed Persons, Australia, July 2000	21.00
6224.0	Labour Force Status and Other Characteristics of Families, Australia, June 2000	20.00
6227.0	Transition from Education to Work, Australia, May 2000	21.00
6245.0	Successful and Unsuccessful Job Search Experience, Australia, July 2000	21.00
6247.1	Part-time, Casual and Temporary Employment, NSW, October 1997	16.00
6250.0	Labour Force Status and Other Characteristics of Migrants, Australia, November 1999	19.50
6254.0	Career Experience, Australia, November 1998	19.00
6260.0	Labour Force Projections, Australia, 1999–2016	18.50
6265.0	Underemployed Workers, Australia, September 2000	21.00
6272.0	Participation in Education, Australia, September 1999	18.50
6275.0	Locations of Work, Australia, June 2000	20.00
6281.0	Work in Selected Culture/Leisure Activities, Australia. 1998–99	18.50
6310.0	Employee Earnings, Benefits and Trade Union Membership, Australia, August 2000	24.00
6342.0	Working Arrangements, Australia, August 1997	19.00
6359.0	Forms of Employment, Australia, August 1998	20.00

(a) Prices quoted are subject to revision.

MAJOR STATISTICAL REGION	STATISTICAL REGION/ STATISTICAL REGION SECTOR	STATISTICAL LOCAL AREA
SYDNEY	Inner Sydney and Inner Western Sydney (SRs)	Ashfield (A)
		Botany Bay (C)
		Burwood (A)
		Concord (A)
		Drummoyne (A)
		Leichhardt (A)
		Marrickville (A)
		South Sydney (C)
		Strathfield (A)
		Sydney (C) — Inner Sydney (C) — Remainder
	Inner Sydney (SR)	Botany Bay (C)
		Leichhardt (A)
		Marrickville (A)
		South Sydney (C)
		Sydney (C) — Inner Sydney (C) — Remainder
	Eastern Suburbs (SR)	Randwick (C)
		Waverley (A)
		Woollahra (A)
	St George–Sutherland (SR)	Hurstville (C)
		Kogarah (A)
		Rockdale (C)
		Sutherland Shire (A)
	Canterbury–Bankstown (SR)	Bankstown (C)
		Canterbury (C)
	Fairfield–Liverpool and Outer South Western Sydney (SRs)	Camden (A)
		Campbelltown (C)
		Fairfield (C)
		Liverpool (C)
		Wollondilly (A)
	Fairfield–Liverpool (SR)	Fairfield (C)
		Liverpool (C)
	Central Western Sydney (SR)	Auburn (A)
		Holroyd (C)
		Parramatta (C)
	Outer Western Sydney (SR) and Blacktown (C)	Blacktown (C)
		Blue Mountains (C)
		Hawkesbury (C)
		Penrith (C)

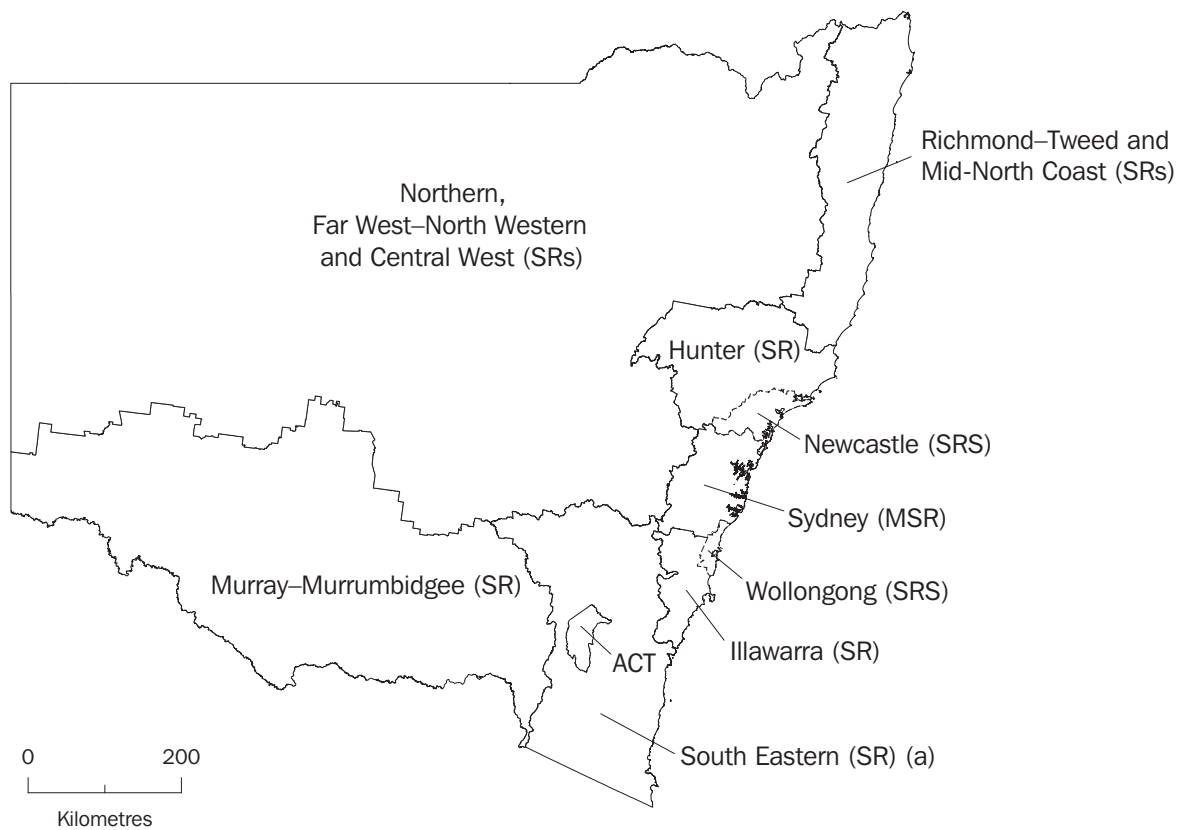
MAJOR STATISTICAL REGION	STATISTICAL REGION/ STATISTICAL REGION SECTOR	STATISTICAL LOCAL AREA
SYDNEY <i>continued</i>	Lower Northern Sydney (SR)	Hunter's Hill (A)
		Lane Cove (A)
		Mosman (A)
		North Sydney (A)
		Ryde (C)
		Willoughby (C)
	Hornsby–Ku-ring-gai (SR) and Baulkham Hills (A)	Baulkham Hills (A)
		Hornsby (A)
		Ku-ring-gai (A)
	Northern Beaches (SR)	Manly (A)
		Pittwater (A)
		Warringah (A)
	Gosford–Wyong (SR)	Gosford (C)
		Wyong (A)
BALANCE OF NSW	Hunter (SR)	Cessnock (C)
		Dungog (A)
		Gloucester (A)
		Great Lakes (A)
		Lake Macquarie (C)
		Maitland (C)
		Merriwa (A)
		Murrurundi (A)
		Muswellbrook (A)
		Newcastle (C) — Inner
		Newcastle (C) — Remainder
		Port Stephens (A)
		Scone (A)
		Singleton (A)
		Cessnock (C)
		Lake Macquarie (C)
		Maitland (C)
		Newcastle (C) — Inner
		Newcastle (C) — Remainder
		Port Stephens (A)
	Newcastle (SRS)	

MAJOR STATISTICAL REGION	STATISTICAL REGION/ STATISTICAL REGION SECTOR	STATISTICAL LOCAL AREA
BALANCE OF NSW <i>continued</i>	Illawarra and South Eastern (SRs)	Bega Valley (A) Bombala (A) Boorowa (A) Cooma–Monaro (A) Crookwell (A) Eurobodalla (A) Goulburn (C) Gunning (A) Harden (A) Kiama (A) Mulwaree (A) Queanbeyan (C) Shellharbour (A) Shoalhaven (C) Snowy River (A) Tallaganda (A) Wingecarribee (A) Wollongong (C) Yarrowlumla (A) — Part A Yarrowlumla (A) — Part B Yass (A) Young (A)
	Illawarra (SR)	Kiama (A) Shellharbour (A) Shoalhaven (C) Wingecarribee (A) Wollongong (C)
	Richmond–Tweed and Mid-North Coast (SRs)	Ballina (A) Bellingen (A) Byron (A) Coffs Harbour (C) Copmanhurst (A) Grafton (C) Greater Taree (C) Hastings (A) Kempsey (A) Kyogle (A) Lismore (C) Lord Howe Island Maclean (A) Nambucca (A) Pristine Waters (A) — Nymboida Pristine Waters (A) — Ulmarra Richmond Valley (A) — Casino Richmond Valley (A) — Bal Tweed (A) — Part A Tweed (A) — Part B

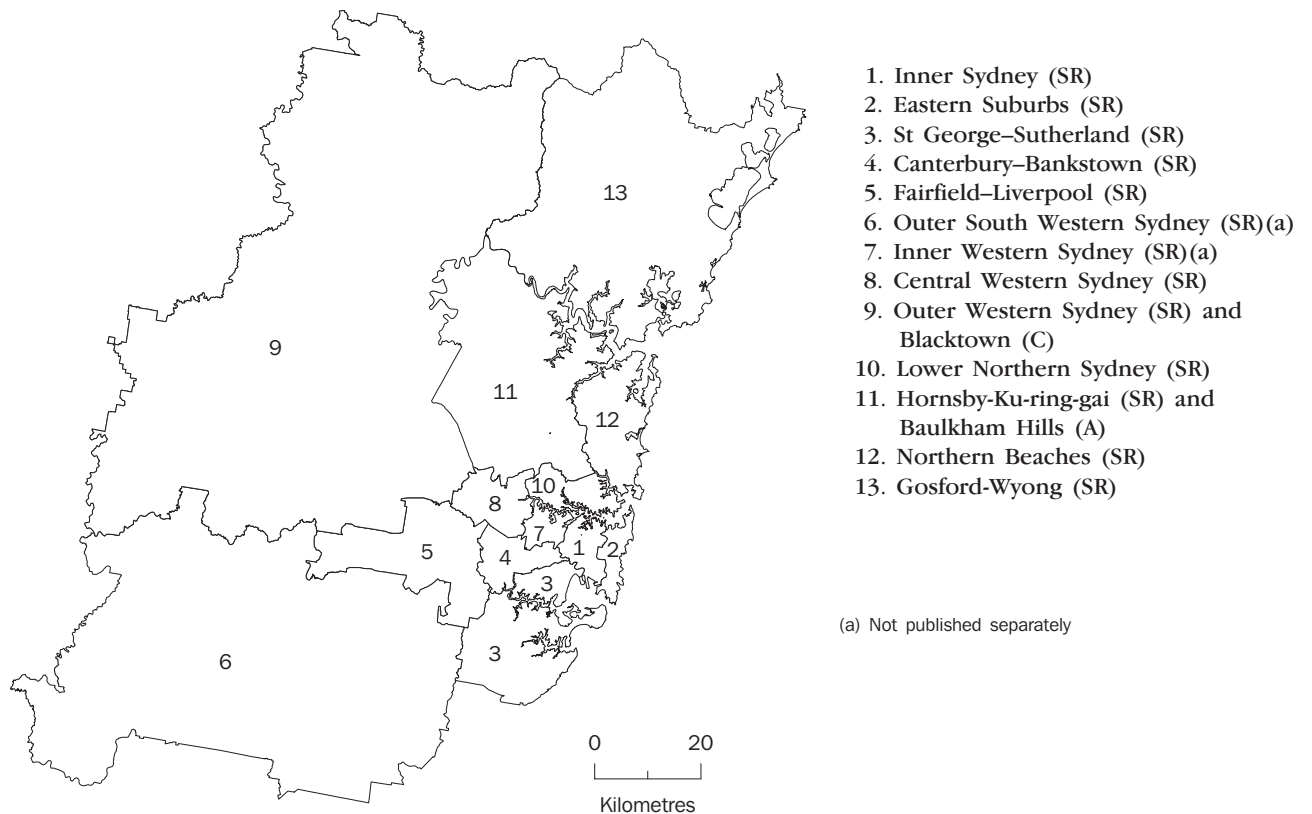
MAJOR STATISTICAL REGION	STATISTICAL REGION/ STATISTICAL REGION SECTOR	STATISTICAL LOCAL AREA
BALANCE OF NSW <i>continued</i>	Northern, Far West — North Western and Central West (SRs)	Armidale Dumaresq (A) - City Armidale Dumaresq (A) - Bal Barraba (A) Bathurst (C) Bingara (A) Bland (A) Blayney (A) — Part A Blayney (A) — Part B Bogan (A) Bourke (A) Brewarrina (A) Broken Hill (C) Central Darling (A) Cabonne (A) — Part A Cabonne (A) — Part B Cabonne (A) — Part C Cobar (A) Coolah (A) Coonabarabran (A) Coonamble (A) Cowra (A) Dubbo (C) Evans (A) — Part A Evans (A) — Part B Forbes (A) Gilgandra (A) Glen Innes (A) Greater Lithgow (C) Gunnedah (A) Guyra (A) Inverell (A) — Part A Inverell (A) — Part B Lachlan (A) Manilla (A) Moree Plains (A) Mudgee (A) Narrabri (A) Narromine (A) Nundle (A) Oberon (A) Orange (C) Parkes (A) Pary (A) Quirindi (A) Rylstone (A) Severn (A) Tamworth (C) Tenterfield (A) Unincorporated Far West Uralla (A) Walcha (A) Walgett (A) Warren (A) Weddin (A) Wellington (A) Yallaro (A)

MAJOR STATISTICAL REGION	STATISTICAL REGION/ STATISTICAL REGION SECTOR	STATISTICAL LOCAL AREA
BALANCE OF NSW <i>continued</i>	Murray–Murrumbidgee (SR)	Albury (C) Balranald (A) Berrigan (A) Carrathool (A) Conargo (A) Coolamon (A) Cootamundra (A) Corowa (A) Culcairn (A) Deniliquin (A) Griffith (C) Gundagai (A) Hay (A) Holbrook (A) Hume (A) Jerilderie (A) Junee (A) Leeton (A) Lockhart (A) Murray (A) Murrumbidgee (A) Narrandera (A) Temora (A) Tumbarumba (A) Tumut (A) Urana (A) Wagga Wagga (C) Wakool (A) Wentworth (A) Windouran (A)
NOT APPLICABLE	Australian Capital Territory and South Eastern (SRs)	Australian Capital Territory Bega Valley (A) Bombala (A) Boorowa (A) Cooma–Monaro (A) Crookwell (A) Eurobodalla (A) Goulburn (C) Gunning (A) Harden (A) Mulwaree (A) Queanbeyan (C) Snowy River (A) Tallaganda (A) Yarrowlumlumla (A) — Part A Yarrowlumlumla (A) — Part B Yass (A) Young (A)

REGIONS OF NSW AND ACT



REGIONS OF SYDNEY (MSR)



(a) Not published separately

TECHNICAL NOTE: DATA RELIABILITY

SOURCES OF ERROR	There are a number of possible sources of error in sample surveys and these can be classified into two types: sampling error; and non-sampling error.
NON-SAMPLING ERRORS	<p>Non-sampling errors may arise as a result of errors in the reporting, recording or processing of the data and can occur even if there is a complete enumeration of the population. Non-sampling errors can be introduced through: inadequacies in the questionnaire; non-response; inaccurate reporting by respondents; errors in the application of survey procedures; incorrect recording of answers; and errors in data entry and processing.</p> <p>It is difficult to measure the size of the non-sampling errors and the extent of these errors could vary considerably in significance from survey to survey, and from question to question. However, every effort is made in the design of the survey and development of survey procedures to minimise the effect of these errors.</p>
SAMPLING ERRORS	Sampling error is the error which occurs by chance because the data were only obtained from a sample, not the entire population.
Standard errors of estimates	<p>One measure of the variability of estimates which occurs as a result of surveying only a sample of the population is the standard error (SE). There are about two chances in three that a survey estimate is within one standard error of the figure that would have been obtained if all persons had been included and about 19 chances in 20 that it is within two standard errors. That is, there are 19 chances in 20 that the true estimate is in the range:</p> $X - 2 \times SE(X) \text{ to } X + 2 \times SE(X)$ <p>(where X is the estimate)</p> <p>The standard error of an estimate can be obtained from the tables on pages 61–63. Linear interpolation should be used to calculate the standard error of estimates falling between the sizes of estimates listed in the table (see example on page 60).</p> <p>In the tables in this publication, only estimates with relative standard errors of 25% or less, and percentages based on such estimates, are considered sufficiently reliable for most purposes. However, estimates and percentages with larger relative standard errors have been included and are preceded by an asterisk (e.g. *3.4) to indicate they are subject to high standard errors and should be used with caution.</p>

Standard errors of estimates
continued

The standard error can also be expressed as a percentage of the estimate and this is known as the relative standard error (RSE). The RSE is determined by dividing the standard error of an estimate SE(X) by the estimate X and expressing it as a percentage. That is:

$$RSE(X) = \frac{SE(X) \times 100}{X}$$

(where X is the estimate)

The look up list on the following page provides a guide for the calculation of standard errors and relative standard errors for a range of statistics.

CALCULATING STANDARD ERRORS

The methods described below refer to the calculation of standard errors for NSW estimates. Standard errors of ACT estimates should be calculated from the table on page 63.

MEASURE OF RELIABILITY TO BE DETERMINED	METHOD
Standard errors of estimates of employed persons.	Determine the SE from the table on page 61 directly.
Standard errors of estimates of unemployed persons.	Multiply the SE from the table on page 61 by 1.06.
Standard errors of estimates of persons not in the labour force.	Multiply the SE from the table on page 61 by 1.1.
Standard errors of rates (e.g. the unemployment rate which is based on the number of unemployed persons expressed as a percentage of the number of persons in the labour force).	Determine the RSE of the numerator (X) and the denominator (Y) then apply the following formula: $RSE\left(\frac{X}{Y}\right) = \sqrt{[RSE(X)]^2 - [RSE(Y)]^2}$
Standard error of average duration of unemployment.	Determine the RSE for the number of persons on which the average is based and multiply this by 1.3.
Standard error of median duration of unemployment.	Determine the RSE for the number of persons on which the average is based and multiply this by 2.0.
Standard error of monthly movements.	From the table on page 62, look up the SE of the larger estimate.
Standard error of quarterly movements.	Determine the standard error of the larger estimate from the table on page 61 and multiply this by 1.11.
Standard error of annual movements.	Determine the standard error of the larger estimate from the table on page 61 and multiply this by 1.3.

LINEAR INTERPOLATION

Linear interpolation is used to determine the standard error of an estimate which falls between two values listed in the size of estimate column in the tables on page 61 or 63. Linear interpolation is best described using an example. In May 2001 there were 798,300 (X_e) employed persons working part-time in NSW. This estimate falls between the values 500,000 (X_l) and 1,000,000 (X_u) in the table on page 61.

The standard error of the estimate is determined as follows. Firstly calculate

$$\begin{aligned} F &= \frac{X_e - X_l}{X_u - X_l} \\ &= \frac{798,300 - 500,000}{1,000,000 - 500,000} \\ &= 0.58 \end{aligned}$$

Secondly, calculate the standard error of the estimate, $SE(X_e)$ thus:

$$\begin{aligned} SE(X_e) &= SE(X_l) + (F \times [SE(X_u) - SE(X_l)]) \\ &= 8,350 + (0.58 \times [11,650 - 8,350]) \\ &= 10,264 \end{aligned}$$

Therefore the standard error of the number of employed persons working part-time in NSW in May 2001 is 10,264.

STANDARD ERRORS

LEVEL OF ESTIMATES(a), NSW

REGIONS IN SYDNEY (MSR)

<i>Size of estimate</i>	NSW	Sydney (MSR)	Balance of NSW (MSR)	Inner Sydney and Inner Western Sydney (SRs)	Inner Sydney (SR)	Eastern Suburbs (SR)	St George-Sutherland	Canterbury-Bankstown (SR)	Outer South Western Sydney (SRs)	Fairfield-Liverpool and Fairfield-Liverpool (SR)
500	320	440	400	310	290	240	200	260	310	300
1 000	520	630	640	460	440	360	310	390	460	450
3 000	1 000	1 060	1 060	880	830	680	590	740	880	850
5 000	1 350	1 340	1 340	1 180	1 110	910	790	990	1 180	1 140
10 000	1 900	1 820	1 810	1 740	1 630	1 340	1 160	1 460	1 730	1 680
20 000	2 600	2 440	2 420	2 540	2 380	1 960	1 700	2 130	2 530	2 450
50 000	3 700	3 500	3 520	4 130	3 880	3 190	2 760	3 470	4 120	3 990
100 000	4 600	4 500	4 600	5 900	5 600	4 600	4 000	5 000	5 900	5 700
200 000	5 750	5 800	6 000	8 400	7 900	6 500	5 600	7 100	8 400	8 100
300 000	6 700	6 700	6 900	10 300	9 600	7 900	6 900	8 600	10 200	9 900
500 000	8 350	7 900	8 300	13 200	12 400	10 200	8 800	11 100	13 100	12 700
1 000 000	11 650	9 800	10 600	—	—	—	—	—	—	—
2 000 000	17 150	12 000	13 300	—	—	—	—	—	—	—
5 000 000	30 750	15 300	17 700	—	—	—	—	—	—	—

REGIONS IN SYDNEY (MSR) — continued

<i>Size of estimates</i>	Central Western Sydney (SR)	Outer Western Sydney (SR) and Blacktown (C)	Lower Northern Sydney (SR)	Hornsby-Ku-ring-gai (SR) and Baulkham Hills (A)	Northern Beaches	Gosford Wyong (SR)
500	230	260	270	260	260	230
1 000	340	400	410	390	400	350
3 000	650	760	770	750	760	670
5 000	870	1 010	1 030	1 000	1 010	890
10 000	1 290	1 490	1 520	1 480	1 490	1 310
20 000	1 880	2 180	2 220	2 150	2 170	1 920
50 000	3 060	3 550	3 620	3 510	3 540	3 120
100 000	4 400	5 100	5 200	5 000	5 100	4 500
200 000	6 200	7 200	7 300	7 100	7 200	6 400
300 000	7 600	8 800	9 000	8 700	8 800	7 800

REGIONS IN BALANCE OF NSW (MSR)

<i>Size of estimates</i>	Hunter (SR)	Newcastle (SRS)	Illawarra and South Eastern (SRS)	Illawarra (SR)	Wollongong (SRS)	Richmond-Tweed and Mid North Coast (SRs)	Northern, Far West and North Western and Central West (SRs)	Murray-Murrumbidgee (SR)
500	300	280	310	290	240	340	330	340
1 000	450	420	470	440	360	510	500	520
3 000	850	810	900	830	680	970	940	990
5 000	1 140	1 080	1 200	1 110	910	1 300	1 260	1 320
10 000	1 680	1 590	1 770	1 630	1 340	1 920	1 860	1 950
20 000	2 450	2 320	2 580	2 390	1 950	2 800	2 720	2 850
50 000	4 000	3 780	4 210	3 890	3 180	4 560	4 430	4 640
100 000	5 700	5 400	6 000	5 600	4 600	6 500	6 300	6 600
200 000	8 100	7 700	8 600	7 900	6 500	9 300	9 000	9 400
300 000	9 900	9 400	10 500	9 700	7 900	11 300	11 000	11 500

(a) Standard errors of estimates from September 1997. For standard errors for earlier periods, see previous issues of this publication.

STANDARD ERRORS

MOVEMENT ESTIMATES(a), NSW

REGIONS IN SYDNEY (MSR)

<i>Size of estimates</i>	<i>NSW</i>	<i>Sydney (MSR)</i>	<i>Balance of NSW (MSR)</i>	<i>Inner Sydney and Inner Western Sydney (SRs)</i>	<i>Inner Sydney (SR)</i>	<i>Eastern Suburbs (SR)</i>	<i>St George-Sutherland (SR)</i>	<i>Canterbury-Bankstown (SR)</i>	<i>Fairfield Liverpool and Outer South Western Sydney (SRs)</i>	<i>Fairfield-Liverpool (SR)</i>
500	580	600	580	310	280	210	200	250	270	240
1 000	730	750	720	420	380	290	270	340	370	340
3 000	1 060	1 070	1 030	700	640	490	460	570	620	560
5 000	1 260	1 270	1 220	890	810	620	580	720	790	710
10 000	1 590	1 600	1 500	1 250	1 100	850	800	1 000	1 100	1 000
20 000	2 010	2 000	1 900	1 700	1 550	1 200	1 100	1 350	1 500	1 350
50 000	2 740	2 700	2 550	2 600	2 350	1 800	1 700	2 100	2 300	2 100
100 000	3 460	3 500	3 200	3 600	3 250	2 500	2 300	2 900	3 150	2 850
200 000	4 370	4 200	4 000	4 950	4 450	3 450	3 200	4 000	4 400	3 950
300 000	5 000	4 800	4 600	5 950	5 400	4 150	3 850	4 800	5 300	4 750
500 000	5 950	5 700	5 400	7 550	6 850	5 250	4 900	6 100	6 700	6 050
1 000 000	7 510	7 100	6 800	—	—	—	—	—	—	—
2 000 000	9 490	8 900	8 500	—	—	—	—	—	—	—
5 000 000	12 920	12 000	11 400	—	—	—	—	—	—	—

REGIONS IN SYDNEY (MSR) — continued

<i>Size of estimate</i>	<i>Central Western Sydney (SR)</i>	<i>Outer Western Sydney (SR) and Blacktown (C)</i>	<i>Lower Northern Sydney (SR)</i>	<i>Hornsby-Ku-ring-gai (SR) and Baulkham Hills (A)</i>	<i>Northern Beaches (SR)</i>	<i>Gosford Wyong (SR)</i>
500	210	280	250	180	220	220
1 000	290	390	340	250	300	310
3 000	480	650	570	420	500	520
5 000	600	820	720	540	630	650
10 000	850	1 150	1 000	750	850	900
20 000	1 150	1 550	1 400	1 000	1 200	1 250
50 000	1 750	2 400	2 100	1 550	1 850	1 900
100 000	2 450	3 300	2 900	2 150	2 500	2 650
200 000	3 350	4 550	4 000	3 000	3 500	3 650
300 000	4 050	5 500	4 850	3 600	4 200	4 400

REGIONS IN BALANCE OF NSW (MSR)

<i>Size of estimate</i>	<i>Hunter (SR)</i>	<i>Newcastle (SRS)</i>	<i>Illawarra and South Eastern (SRS)</i>	<i>Illawarra (SR)</i>	<i>Wollongong (SRS)</i>	<i>Richmond-Tweed and Mid North Coast (SRs)</i>	<i>Northern, Far West North Western and Central West (SRs)</i>	<i>Murray-Murrumbidgee (SR)</i>
500	290	270	300	260	220	320	310	280
1 000	400	370	410	360	300	440	430	390
3 000	660	620	690	600	500	740	720	650
5 000	840	780	870	760	630	930	910	830
10 000	1 150	1 100	1 200	1 050	850	1 300	1 250	1 150
20 000	1 600	1 500	1 650	1 450	1 200	1 800	1 750	1 600
50 000	2 450	2 300	2 550	2 200	1 850	2 700	2 650	2 400
100 000	3 400	3 150	3 500	3 050	2 550	3 750	3 650	3 350
200 000	4 650	4 350	4 800	4 200	3 500	5 200	5 050	4 600
300 000	5 650	5 250	5 800	5 100	4 250	6 250	6 100	5 550

(a) Standard errors of month to month movements from October 1997–November 1999 onwards. For standard errors for earlier periods, see previous issues of this publication.

STANDARD ERRORS

STANDARD ERRORS, LEVEL ESTIMATES(a) — NSW AND ACT

<i>Size of estimate</i>	<i>ACT and South Eastern (SRs)</i>	<i>ACT</i>
500	280	210
1 000	390	270
3 000	620	400
5 000	770	500
10 000	1 020	600
20 000	1 340	800
50 000	1 910	1 200
100 000	2 500	1 650
200 000	3 200	2 250
300 000	3 700	2 700

(a) Standard errors of estimates from September 1997. For standard errors for earlier periods, see previous issues of this publication.

STANDARD ERRORS, MOVEMENT ESTIMATES(a) — NSW AND ACT

<i>Size of estimate</i>	<i>ACT and South Eastern (SRs)</i>	<i>ACT</i>
500	220	170
1 000	280	210
3 000	420	310
5 000	510	360
10 000	650	450
20 000	850	570
50 000	1 200	760
100 000	1 550	960
200 000	2 000	1 200
300 000	2 300	1 370

(a) Standard errors of month to month movements from October 1997–November 1999 onwards. For standard errors for earlier periods, see previous issues of this publication.

- INTERNET** www.abs.gov.au the ABS web site is the best place to start for access to summary data from our latest publications, information about the ABS, advice about upcoming releases, our catalogue, and Australia Now—a statistical profile.
- LIBRARY** A range of ABS publications is available from public and tertiary libraries Australia-wide. Contact your nearest library to determine whether it has the ABS statistics you require, or visit our web site for a list of libraries.
- CPI INFOLINE** For current and historical Consumer Price Index data, call 1902 981 074 (call cost 77c per minute).
- DIAL-A-STATISTIC** For the latest figures for National Accounts, Balance of Payments, Labour Force, Average Weekly Earnings, Estimated Resident Population and the Consumer Price Index call 1900 986 400 (call cost 77c per minute).

INFORMATION SERVICE

Data which have been published and can be provided within five minutes are free of charge. Our information consultants can also help you to access the full range of ABS information—ABS user-pays services can be tailored to your needs, time frame and budget. Publications may be purchased. Specialists are on hand to help you with analytical or methodological advice.

- PHONE** **1300 135 070**
- EMAIL** **client.services@abs.gov.au**
- FAX** 1300 135 211
- POST** Client Services, ABS, GPO Box 796, Sydney 1041

WHY NOT SUBSCRIBE?

ABS subscription services provide regular, convenient and prompt deliveries of ABS publications and products as they are released. Email delivery of monthly and quarterly publications is available.

- PHONE** 1300 366 323
- EMAIL** subscriptions@abs.gov.au
- FAX** 03 9615 7848
- POST** Subscription Services, ABS, GPO Box 2796Y, Melbourne 3001



2620110005016

ISSN 1322-0179

RRP \$24.00